

BRAKE ASSEMBLIES

Electric Trailer Brakes

Service Parts for "Dexter" Electric Brakes

12" x2" Dexter "MHU" Brake Parts

8K & 10K ORG Rockwell Electric Brakes

Electric Trailer Brakes - by Trailer Pro

Heavy Duty Electric Trailer Brakes

Electric Trailer Brakes - by AL-KO/Hayes

Service Parts for "AL-KO/Hayes" Electric Brakes

Hydraulic Trailer Brakes

Service Parts for "Dexter" Hydraulic Brakes

Service Parts for "Titan/Dico" Hydraulic Brakes

Service Parts for "AL-KO/Hayes" Hydraulic Brakes

"Tie-Down" 8" Disc Brakes

"Kodiak" 8" Disc Brakes

"Titan" Disc Brakes

"G4" Stainless Steel Disc Brake Parts

"G4" to "G5" Caliper Conversion Kits

"G5" Stainless Steel Disc Brakes

Eliminator Disc Brakes with Vented Rotor

& Aluminum Caliper

Integral Style Vented Disc Brake Kits

Vented Brake Parts

3.5K Disc Brake - by Kodiak

5.2 - 6K Disc Brake - by Kodiak

7K Disc Brake - by Kodiak

8K Disc Brake - by Kodiak

UFP Disc Brake Kit & Disc Brake Parts

UFP Calipers & Caliper Parts

Service Parts for "Dexter" Disc Brakes

Service Parts for "AL-KO/Hayes"

10 - 12K Disc Brakes

Service Parts for "AL-KO/Hayes" Air Brakes

Service Parts for "Dexter" Air Brakes

Hydraulic Brake Line Kit

Rubber Hydraulic Brake Line Kit

Reverse Lock Out Solenoid

Back Flow Style Brakes Solenoid

Brake Flush Kit

Brake Flanges

Brake Mounting Hardware Kits



Information

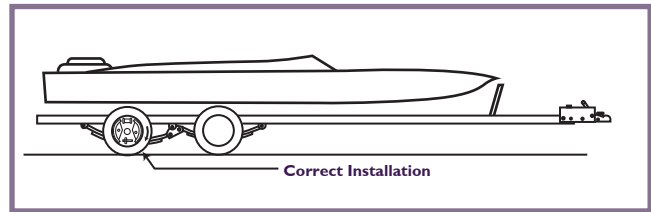
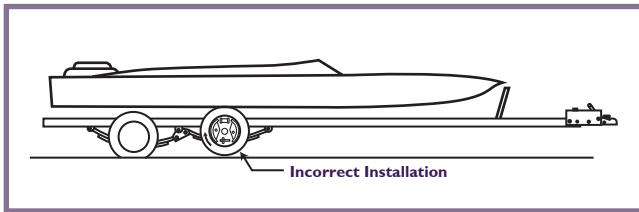
Hubs
& AxlesBrake
AssembliesSuspensions
& FastenersTires &
WheelsCouplers
Jacks &
WinchesHitches &
Towing
AccessoriesBody
Components

Trailer Parts

Lights &
ElectricalLocks &
Cargo ControlBrake
Actuating
Systems

Switches

Brake Action Tandem Trailers Tongue-Towed



Tongue towed trailer require brakes on all 4 wheels of tandem axles for maximum braking. However, some trailer manufacturers mount brakes on only two wheels of a tandem. To determine whether the brakes should be mounted on the front or rear wheels of the tandem requires a study of the physical action on the torque exerted when the springs have an equalizing shackle between the front and rear axle.



When the brakes are on the front wheels, the turning torque tilts the shackle to its upper limit, reducing the load on the front wheel and increasing the load on the rear wheel. This action causes the front wheel to skid more readily, reducing effective braking of the vehicle.

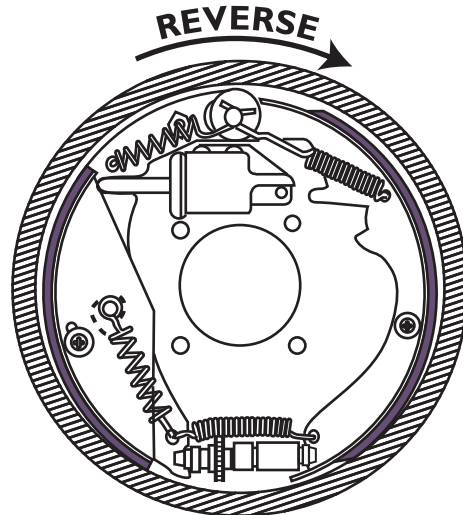
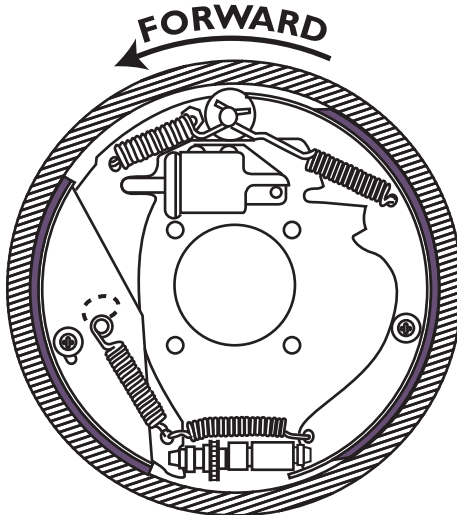
The sketch below shows an exaggerated condition of the above explanation. It is our opinion that when brakes are installed on only two wheels, they should be mounted on the rear, rather than on the front of the tandem assembly, using an equalizer shackle mounting.

Free Backing Brakes Allow you to back up with the Surge Braking System

Here's the way it works

As wheel revolves forward, outward movement of shoe lever engages brake shoe with drum providing full braking action.

As wheel moves in reverse, shoes turn with drum until lining pressure is released. Hydraulic pressure is contained by the cylinder.



Drum Surface



Shoe Surface

NOTE: Free backing brakes are not effective in reverse

How to Select Electric Brakes & Brake Parts

A Few Things To Keep In Mind:

1. To determine the right or left side brake assembly, position the brake with the magnet at the bottom. On electric brakes, the actuating arm will always curve from the pivot pin to the magnet, toward the left for left hand brakes and toward the right for right hand brakes. (See the illustration.)
2. When ordering your brake assembly or brake replacement part, always use both the part number and the reference number. Both are necessary to insure prompt and correct filling of your order.
3. Sometimes the easiest, most economical way to repair a brake is to replace the complete assembly. By removing wires and a few nuts and bolts, you have all new parts, saving time, trouble and expense.
4. Whether you choose to replace the entire brake assembly, only individual parts in need of repair, or need new brakes to build a trailer—We have what you need to do the job right! We are just a telephone call away.

Selecting Electric Brake Parts

Determine the size of your brake

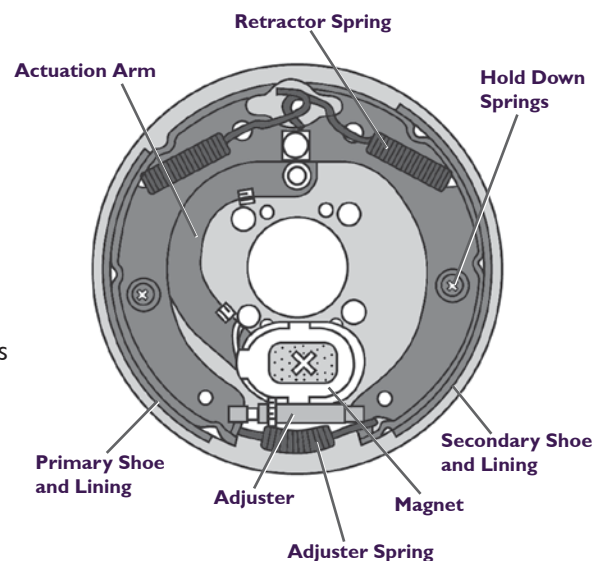
- Measure the diameter of the mounted brake shoe
- Measure the width of the lining

Determine the manufacturer of your brake

- Select the brake you have by looking at the key identification points shown in the drawing
- Check the electric brake chart for your brake and the part you need. Further identification may be made by referring to the exploded drawings and magnet photos of each brake

Select the part you need

- Though many parts are shown, we carry only the replacement parts numbered. The words “Parts Only” indicate that complete brake assemblies are not available.



Using The Electric Brake Chart

- Find the picture that matches the assembly or the part you need.
- The part and reference numbers are just below the picture of your assembly or part. Part and reference numbers are placed beside the photo of individual replacement parts. Use them to order what you need.
- Double check your part against its listing in the pages which show the exploded drawings, assembly and magnet photographs.
- Call or fax your order to us.

Reasons Why Brake Hardware Should Be Replaced

- Worn, weak return springs will cause the brake linings to drag against the drum and cause premature brake failure.
- Hold-down springs will lose their tension and allow the brake shoes to wobble or ride up against the face of the brake drum, causing premature lining failure.
- A frozen adjusting screw will not allow shoes to be adjusted properly.
- Rubber dust plugs will crack with age and allow dirt to contaminate linings. (Not shown.)
- A stretched self-adjusting cable prevents the self-adjusting lever from properly aligning the shoes. (Not shown or illustrated.)

Electric Trailer Brake Part Identification

Manufacturer Identification

AL-KO	AL-KO levers are very flat. The brake shoes do not have anything unusual about them. AL-KO uses only one return spring at the top on both 10 and 12-inch units. With the drum off, you can tell what size the system is if the magnets have never been replaced. The 10-inch brake will have a magnet with light green wires and the 12-inch brake will have white wires.
Dexter	Dexter uses a stamp on the back of the backing plate that identifies the size of the brake. Looking on the back side you will see a triangle. Around the triangle you will see Dexter and the size (i.e. 10" x 2-1/2" or 12" x 2"). Dexter uses 2 return springs on all late model brakes; some early 12-inch brakes used a single return spring.
Hayes	Hayes brake shoe webs have a tooth that hangs down at the top and use a single return spring. Early 12-inch brakes used a dual return spring. Hayes axle is owned by AL-KO. AL-KO backing plates have been seen on some of the new Hayes axles. It looks as if they are still using the Hayes name and are starting to use AL-KO parts.
Fayette	Fayette axles are obsolete. If you find a Fayette axle tag and the trailer is worth keeping you should consider changing the axles to AL-KO or Dexter. At that time it is recommended that the spring hangers and bushings also be replaced.

Brake Size Identification

Axle Identification	Axles generally have an ID tag located on the axle crossbar that gives you the axle capacity. Check there first. This would give you a starting reference point.
Brake Drum / Shoe Size	Measuring is the same for all brands. Using a tape measure you can do a random measurement as to the diameter by measuring across the drum. If it is a 10-inch drum you will measure approximately 11 inches across for an outside measurement. The 12-inch brake will measure approximately 13 inches for an outside measurement. The drum would need to be removed to get the correct diameter and width.

Magnet Identification

(Magnets can be identified by the color of the wire used)

Dexter	7" x 1¼"	The magnets are round. Prior to April 1990 they had yellow wires, after 1990 the magnet has white wires. Replacement of magnets will need to be done in pairs and updated to the new magnet along with the lever. The early levers are weak and will bend and hang up as they wear.
Dexter	10" x 1½"	The magnet wires for the early model round magnets are white and the late model oval magnets are yellow.
Hayes	10" x 1⅝"	The magnet wires for the early model round magnets are red and the late model oval magnets are green.
AL-KO	10" x 2¼"	It will have light green wires.
Hayes	10" x 2¼"	The early model round will have red wires and the late model will have oval green wires.
Dexter	10" x 2¼"	It uses green wires.
Fayette	10" x 2¼"	The round magnets will have white wires (obsolete).
AL-KO	12" x 2"	It will have white wires.
Hayes	12" x 2"	The early model round magnet will have red wires, the late model will be an oval magnet with white wires.
Dexter	12" x 2"	It will have white wires.
Dexter Centerline	12" x 2"	The 4.5K axles will have red orange wires, the 6/7K axles will have red wires (obsolete for both sizes).

TECHNICAL INFORMATION CURRENT AS OF THE PRINTING OF THIS CATALOG. CONTACT TECHNICAL SERVICE FOR PERIODIC UPDATES.

Trailer Brake Troubleshooting

NO BRAKES

- Check for defective circuit breaker.
- Check for open or shorted circuit.
- Check for properly wired system, including a good ground between towing vehicle and trailer, not through trailer hitch.
- Check for defective controller or loose wiring at controller.
- Check brake adjustment.
- Check for defective resistor or loose wiring at resistor (hydraulic units only).
- Check for defective or worn magnet(s).
- Check for damaged or worn connector between towing vehicle and trailer.
- Ensure correct controller is installed.

INTERMITTENT OR SURGING BRAKES

- Check for defective circuit breaker.
- Check for out-of-round brake drums.
- Check for properly wired system, including a good ground between towing vehicle and trailer, not through trailer hitch.
- Check for defective magnets or magnet wiring.
- Check for loose or worn wheel bearings.

INEFFECTIVE OR WEAK BRAKES

- Insure trailer is not overloaded.
- Check for loose or corroded connections.
- Check for properly wired system, including a good ground between towing vehicle and trailer, not through trailer hitch.
- Check for shorted circuit.
- Check for proper variable resistor resistance (external resistor or controller) to trailer (for hydraulic units only).
- Worn or defective magnet.
- Check brake adjustment. Check for bent backing plate flange.
- Check for contaminated brake linings.
- Check brake system wiring to ensure proper gauge wiring is used. Ensure wiring is not connected through the stop light circuit.
- Check for worn, damaged or improper brake linings.
- Check for weak or broken brake shoe return spring.
- Check for defective or worn brake drums.
- Check for loose axle.
- Check that correct controller is installed.
- Improper controller installed or settings (level or gain).

GRABBING OR LOCKING BRAKES

- Check for improperly installed flanges.
- Check for contaminated brake linings (grease on linings).
- Check for weak or broken brake shoe return spring.
- Check for out-of-round brake drums.
- Ensure a variable resistor is installed (if necessary) (hydraulic units only).
- Check for variable resistor for proper resistance (hydraulic units only).

GRABBING OR LOCKING BRAKES (Continued)

- Check that correct controller is installed.
- Rust on armature plate or brake drum.
- Check for loose or worn wheel bearings.
- Improper controller installed position.
- Check for improper gain setting.
- Check for improper boost setting.

DRAGGING BRAKES

- Check brake adjustment.
- Check for defective controller.
- Check for improperly installed flange.
- Check for corroded brake assembly.
- Check for weak or broken brake shoe return spring.
- Check for worn or damaged lever arm between magnet and brake shoe.
- Improper controller installed position.

NOISY BRAKES

- Check brake adjustment.
- Check for worn brake shoes.
- Check for contaminated brake linings.
- Check for weak or broken shoe return springs.
- Check for bent backing plate.
- Check for improperly installed flange.
- Check wheel bearing adjustment.
- Check for worn or damaged wheel bearings.
- Check for worn or damaged magnets.

BRAKES LOCKED, BRAKE PEDAL NOT DEPRESSED

- Check stoplight switch adjustment.
- Check for short between stoplight switch circuit and power supply circuit.
- If brakes are locked when 4-way flashers are operated, check for Pulse Preventer installed in circuit.
- Check breakaway switch (pulled).

UNEVEN TIRE WEAR

Possibly due to: A bent or misaligned axle, Improper tire inflation. On tandem axle trailers, check voltage at front axle and rear axle with brakes applied. At times, the front axle will "lift" allowing front wheel to lock and slide. Correction can be made installing magnets with even resistance.

INOPERATIVE BREAKAWAY SWITCH

- Check for dead or weak 12-volt battery, on trailer.
- Check all wiring and connections.
- Check breakaway switch.
- If only one brake is operating, check other magnets.

Trailer Brake Adjustment *

Brakes should be adjusted after the first 200 miles of operation when the brake shoes and drums have "seated" and at 3000 mile intervals, or as use and performance requires. The brakes should be adjusted in the following manner:

1. Jack up trailer and secure on adequate capacity jack stands. Follow trailer manufacturers recommendations for lifting and supporting the unit. Check that the wheel and drum rotate freely.

WARNING: Do not lift or support trailer on any part of the axle or the suspension system.

2. Remove the adjusting hole cover from the adjusting slot on the bottom of the brake backing plate.

3. With a screwdriver or standard adjusting tool, rotate the starwheel of the adjuster assembly to expand the brake shoes. Adjust the brake shoes out until the pressure of the linings against the drum makes the wheel very difficult to turn.

Note: With drop spindle axles, a modified adjusting tool with about an 80 degree angle should be used.

4. Then rotate the starwheel in the opposite direction until the wheel turns freely with a slight lining drag.

5. Replace the adjusting hole cover and lower the wheel to the ground.

6. Repeat the above procedure on all brakes.

WARNING: Never crawl under your trailer unless it is resting on properly placed jack stands.

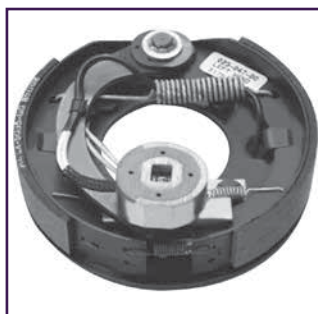
Follow the trailer manufacturers recommendations for lifting and supporting the unit. Do not lift or place supports on any part of the suspension system.

* Trailer Brake Adjustment procedures courtesy Dexter Axle.



Electric Trailer Brakes

(Left and Right Brake Clusters are sold separately - Brake Mounting Hardware **NOT** included - Page C33)



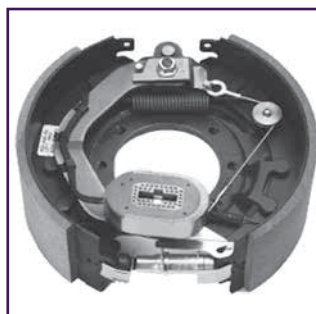
7" x 1¼"



10" x 2¼"



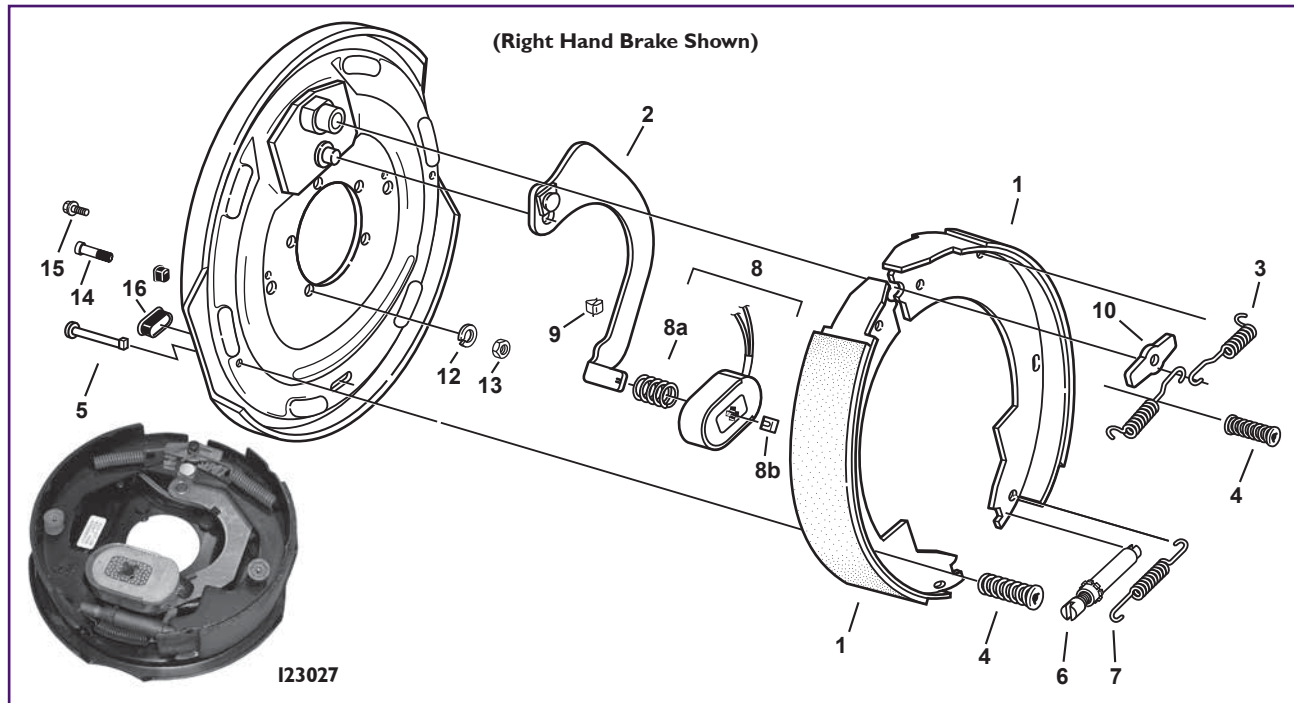
12" x 2"



12¼" x 4"

Part #	Brake Shoe Size	Capacity	Application	Mounting
123047	7" x 1¼"	2,000 lbs	LH Brake Assy.	4 Bolt Mounting
123048	7" x 1¼"	2,000 lbs	RH Brake Assy.	4 Bolt Mounting
123026	10" x 2¼"	3,500 lbs	LH Brake Assy.	4 Bolt Mounting
123027	10" x 2¼"	3,500 lbs	RH Brake Assy.	4 Bolt Mounting
123105	12" x 2"	5,200 - 6,000 lbs	LH Brake Assy.	5 Bolt Mounting
123106	12" x 2"	5,200 - 6,000 lbs	RH Brake Assy.	5 Bolt Mounting
123105-09	12" x 2"	5,200 - 6,000 lbs	LH Brake Assy.	4 & 5 Bolt Mounting
123106-09	12" x 2"	5,200 - 6,000 lbs	RH Brake Assy.	4 & 5 Bolt Mounting
123180	12" x 2"	7,000 lbs	LH Brake Assy.	5 Bolt Mounting
123181	12" x 2"	7,000 lbs	RH Brake Assy.	5 Bolt Mounting
123428	12¼" x 2½"	7,200 lbs	LH Brake Assy.	4 Bolt Mounting
123429	12¼" x 2½"	7,200 lbs	RH Brake Assy.	4 Bolt Mounting
123434	12¼" x 3⅜"	8,000 - 9,000 lbs	LH Brake Assy.	4 Bolt Mounting
123435	12¼" x 3⅜"	8,000 - 9,000 lbs	RH Brake Assy.	4 Bolt Mounting
123450	12¼" x 3⅜"	9,000 - 10,000 lbs	LH Brake Assy.	7 Bolt Mounting
123451	12¼" x 3⅜"	9,000 - 10,000 lbs	RH Brake Assy.	7 Bolt Mounting
123438	12¼" x 4"	10,000 lbs HD	LH Brake Assy.	7 Bolt Mounting
123439	12¼" x 4"	10,000 lbs HD	RH Brake Assy.	7 Bolt Mounting
123442	12¼" x 5"	12,000 lbs	LH Brake Assy.	7 Bolt Mounting
123443	12¼" x 5"	12,000 lbs	RH Brake Assy.	7 Bolt Mounting
123446	12¼" x 5"	15,000 lbs	LH Brake Assy.	7 Bolt Mounting
123447	12¼" x 5"	15,000 lbs	RH Brake Assy.	7 Bolt Mounting

NOTE: The parts breakdown for these clusters are listed on the following page.
Other brake clusters and parts are listed on the following page.



Service Parts For “Dexter” Electric Brakes

4 Bolt Cast
Backing Plate

Item	#	Side	2,000# 7 x 1 1/4"	2,800# 10 x 1 1/2"	3,500# 10 x 2 1/4"	5,200-6,000# 12 x 2"	7,000# 12 x 2"	7,200# 12 1/4 x 2 1/2"
Cluster	-	LH RH	123047 123048	- -	123026 123027	123105 123106	123180 123181	123428 123429
Brake Shoes	1	LH RH LH/RH	171045	171046	171047	171127	171127	171497 171496 171410*
Actuation Lever	2	LH RH	147114-1 147115-1	147112-1 147113-1	147019 147020	147107 147108	147107 147108	147124-2 147125-2
Retractor Spring	3	LH/RH	146024	146084	146009	146009	146009	146119
Hold-Down Springs (2)	4	LH/RH	146023	146077	146077	146077	146077	-
Hold-Down Pin (2)	5	LH/RH	-	149009	4795	149011	149011	-
Adjusting Screw	6	LH/RH	143021	4761	4761	4761	4761	148017
Adj. Screw Spring	7	LH/RH	146022	146018	146018	146018	146018	146018
Prior To 4 - 1 - 90	8	LH/RH	171056	171057	-	-	-	-
Magnet Kit	8	LH/RH	171057	171177	171104	171105	171125	171441
Magnet Spring	8a	LH/RH	146086	146080	146080	146080	146080	146117
Magnet Clip	8b	LH/RH	146121	127009	127009	127009	127009	127050
Arm Clip	9	LH/RH	127005	127005	127005	127005	127005	127039
Anchor Post Clip	10	LH/RH	146030	146030	105067	105067	105067	171016
Lock Washer	12	LH/RH	4141	-	4141	4145	4145	4119
Nut	13	LH/RH	4142	-	4142	4144	4144	3909
Hex Bolt	14	LH/RH	-	-	-	4143	4143	107251
Press-in Stud	15	LH/RH	107041	-	107041	107112	107112	-
Adjusting Hole Cover	16	LH/RH	146007	146007	146007	146007	146007	146007
Centering Spring (2)	17	LH/RH	146114	-	-	-	-	146120

Note: *9 Hole Stamped Backing Plate

Information

Hubs
& Axles

Brake
Assemblies

Suspensions
& Fasteners

Tires &
Wheels

Couplers
Jacks &
Winches

Hitches &
Towing
Accessories

Body
Components

Trailer Parts

Lights &
Electrical

Locks &
Cargo Control

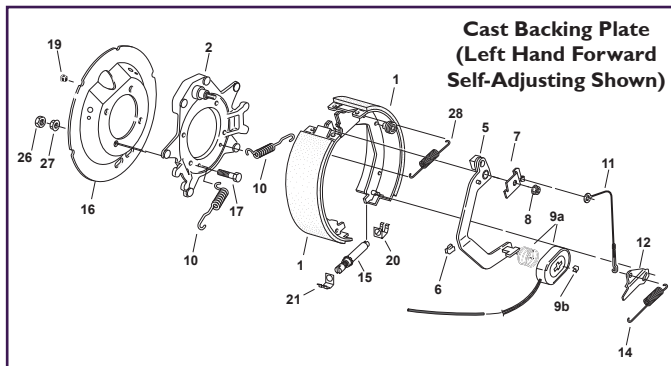
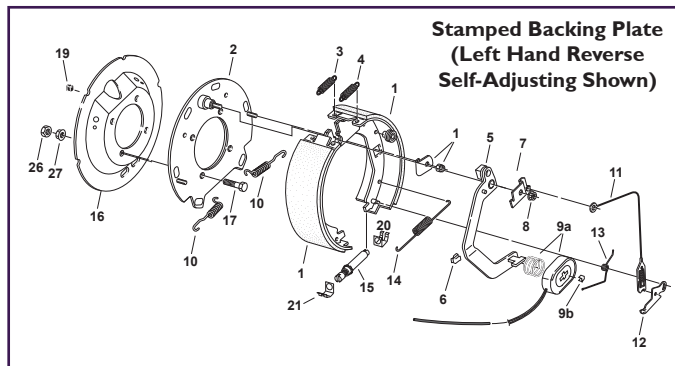
Brake
Actuating
Systems

Switches



DEXTER AXLE

Service Parts For "Dexter" Electric Brakes (Continued)



Item	#	Side	8 & 9K Old Style 12 1/4 x 3 3/8"	9 & 10K GD 12 1/4 x 3 3/8"	10,000#-HD 12 1/4 x 4"	12,000#-HD 12 1/4 x 5"	15,000#-HD 12 1/4 x 5"
Cluster	-	LH RH	123434 123435	123450 123451	123438 123439	123442 123443	123446 123447
Brake Shoes (Old Style Stamped Backing Plate)	1	LH RH	171049 171050	171049 171050	171051 171052	171053 171054	171053 171054
Brake Shoes (New Style Cast Plate)	1	LH RH	171499 171498	171499 171498	171501 171500	171503 171502	171503 171502
Return Spring Rear (K)	3	LH/RH	146071	146071	146071	146071	146071
Return Spring Front (G)	4	LH/RH	146083	146083	146083	146083	146083
Magnet Arm	5	LH RH	147123-38 147123-37	147123-38 147123-37	147123-38 147123-37	147123-36 147123-35	147123-36 147123-35
Oval Magnet	6	LH/RH	127039	127039	127039	127039	127039
Wire Clip	6	LH/RH	127039	127039	127039	127039	127039
Arm/Shoe Retainer	7	LH RH	171455-01 171455-02	171455-01 171455-02	171455-01 171455-02	171455-01 171455-02	171455-01 171455-02
Magnet Kit - Oval	9	LH/RH	171375	171376	171376	171377	171378
Magnet Spring	9a	LH/RH	146117	146117	146117	146117	146117
Magnet Clip	9b	LH/RH	127050	127050	127050	127050	127050
Centering Spring	10	LH/RH	146136	146136	146136	146136	146136
Adjuster Cable (Stamped)	11	LH/RH	171020	171020	171020	171020	171020
Adjuster Cable (Cast)	11	LH/RH	171462	171462	171462	171462	171462
Adjuster Lever (Stamped)	12	LH RH	171019-1 171019-2	171019-1 171019-2	171019-1 171019-2	171019-1 171019-2	171019-1 171019-2
Adjuster Lever (Cast)	12	LH RH	171464 171463	171464 171463	171464 171463	171464 171463	171464 171463
Lever Spring (Blue)	13	LH RH	146073 146074	146073 146074	146073 146074	146073 146074	146073 146074
Lever Spring (White)	13	LH RH	146073 146074	146073 146074	146073 146074	146073 146074	146073 146074
Adjuster Spring (Stamped)	14	LH/RH	146072	146072	146072	146072	146072
Adjuster Spring (Cast)	14	LH/RH	146137	146137	146137	146137	146137
Adjusting Screw Assembly (Stamped)	15	LH RH	148009 148010	148009 148010	148009 148010	148009 148010	148009 148010
Adjusting Screw Assembly (Cast)	15	LH RH	148019 148020	148019 148020	148019 148020	148019 148020	148019 148020
Dust Shield	16	LH/RH	136115-20	136115-21	136115-23	136115-23	136115-23
Brake Mounting Bolt	17	LH/RH	107097	107116	107116	107116	107116
Adj. Clip (Thread End)	20	LH/RH	146132	146132	146132	146132	146132
Adj. Clip (Barrel End)	21	LH/RH	146133	146133	146133	146133	146133
Nut	26	LH/RH	3909	106017	106017	106017	106017
Lock Washers	27	LH/RH	4119	4141	4141	4141	4141
Return Spring	28	LH/RH	146119	146119	146119	146119	146119

Information	Hubs & Axles	Brake Assemblies	Suspensions & Fasteners	Tires & Wheels	Couplers, Jacks & Winches	Hitches & Towing Accessories	Body Components	Trailer Parts	Lights & Electrical	Locks & Cargo Control	Brake Actuating Systems	Switches
-------------	--------------	-------------------------	-------------------------	----------------	---------------------------	------------------------------	-----------------	---------------	---------------------	-----------------------	-------------------------	----------

Electric Trailer Brakes - by Trailer Pro

(Left and Right Brake Clusters are sold separately - Brake Mounting Hardware NOT included - Page C33)



4718



Part #	Brake Shoe Size	Capacity	Application	Mounting
4718	10" x 2 1/4"	3,500 lbs	LH Brake Assembly	4 Bolt
4719	10" x 2 1/4"	3,500 lbs	RH Brake Assembly	4 Bolt



4726

4731-2

Part #	Description
4726	Replacement Magnet Kit for 10" x 2 1/4". Green Wires.
4731-2	Replacement Shoe Kit for 10" x 2 1/4". Contains 4 shoes and hold downs for 2 brakes.

Note: All replacement parts for Dexter 10" x 2 1/4" will fit Trailer Pro brakes



4723

Part #	Brake Shoe Size	Capacity	Application	Mounting
4722	12" x 2"	5,200 - 6,000 lbs	LH Brake Assembly	5 Bolt
4723	12" x 2"	5,200 - 6,000 lbs	RH Brake Assembly	5 Bolt



4723

4732-2

Part #	Description
4727	Replacement Magnet Kit for 12" x 2". White Wires.
4732-2	Replacement Shoe Kit for 12" x 2". Contains 4 shoes and hold downs for 2 brakes.



4706

Part #	Brake Shoe Size	Capacity	Application	Mounting
4705	12" x 2"	7,000 lbs	LH Brake Assembly	5 Bolt
4706	12" x 2"	7,000 lbs	RH Brake Assembly	5 Bolt
4732-2	Replacement Shoe Kit for 12" x 2". Contains 4 shoes and hold downs for 2 brakes.			
4728	Replacement Magnet Kit for 12" x 2". 7K Brake. Black Wires.			

Heavy Duty Electric Trailer Brakes

These brakes will fit AxleTek, Axis, Dexter, and some Rockwell axles.

Repair parts are the same as Dexter.

(Left and Right Brake Clusters are sold separately - Brake Mounting Hardware **NOT** included - Page C33)

Part #	Brake Shoe Size	Capacity	Application	Mounting
123434-I	12¼" x 3⅝"	8,000 - 9,000 lbs	LH Brake Assy.	4 Bolt
123435-I	12¼" x 3⅝"	8,000 - 9,000 lbs	RH Brake Assy.	4 Bolt



123435-I

Part #	Brake Shoe Size	Capacity	Application	Mounting
123450-I	12¼" x 3⅝"	9,000 - 10,000 lbs	LH Brake Assy.	7 Bolt
123451-I	12¼" x 3⅝"	9,000 - 10,000 lbs	RH Brake Assy.	7 Bolt



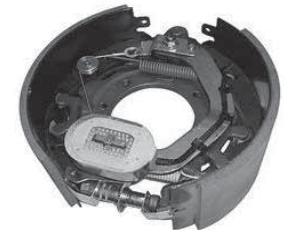
123450-I

Part #	Brake Shoe Size	Capacity	Application	Mounting
123438-I	12¼" x 4"	10,000 lbs HD	LH Brake Assy.	7 Bolt
123439-I	12¼" x 4"	10,000 lbs HD	RH Brake Assy.	7 Bolt



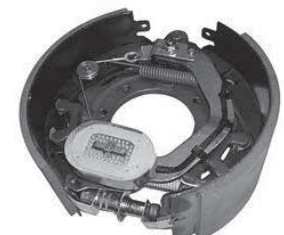
123439-I

Part #	Brake Shoe Size	Capacity	Application	Mounting
123442-I	12¼" x 5"	12,000 lbs	LH Brake Assy.	7 Bolt
123443-I	12¼" x 5"	12,000 lbs	RH Brake Assy.	7 Bolt



123442-I

Part #	Brake Shoe Size	Capacity	Application	Mounting
123446-I	12¼" x 5"	15,000 lbs	LH Brake Assy.	7 Bolt
123447-I	12¼" x 5"	15,000 lbs	RH Brake Assy.	7 Bolt



123447-I

Information

Hubs
& AxlesBrake
AssembliesSuspensions
& FastenersTires &
WheelsCouplers
Jacks &
WinchesHitches &
Towing
AccessoriesBody
Components

Trailer Parts

Lights &
ElectricalLocks &
Cargo ControlBrake
Actuating
Systems

Switches



HAYES AXLE, INC.



Electric Trailer Brakes - by AL-KO/Hayes

(Left and Right Brake Clusters are sold separately - Brake Mounting Hardware **NOT** included - Page C33)



4707

Part #	Brake Shoe Size	Capacity	Application	Mounting
4707	12" x 3 $\frac{3}{8}$ "	8,000 lbs	LH Brake Assy.	4 Bolt
4708	12" x 3 $\frac{3}{8}$ "	8,000 lbs	RH Brake Assy.	4 Bolt



4711

Part #	Brake Shoe Size	Capacity	Application	Mounting
4711	12 $\frac{1}{4}$ " x 3 $\frac{1}{2}$ "	9,000 - 12,000 lbs	LH Brake Assy.	5 Bolt
4712	12 $\frac{1}{4}$ " x 3 $\frac{1}{2}$ "	9,000 - 12,000 lbs	RH Brake Assy.	5 Bolt



4713

Part #	Brake Shoe Size	Capacity	Application	Mounting
4713	12 $\frac{1}{4}$ " x 5"	16,000 lbs	LH Brake Assy.	5 Bolt
4714	12 $\frac{1}{4}$ " x 5"	16,000 lbs	RH Brake Assy.	5 Bolt

Information

Hubs
& Axles

Brake
Assemblies

Suspensions
& Fasteners

Tires &
Wheels

Couplers
Jacks &
Winches

Hitches &
Towing
Accessories

Body
Components

Trailer Parts

Lights &
Electrical

Locks &
Cargo Control

Brake
Actuating
Systems

Switches

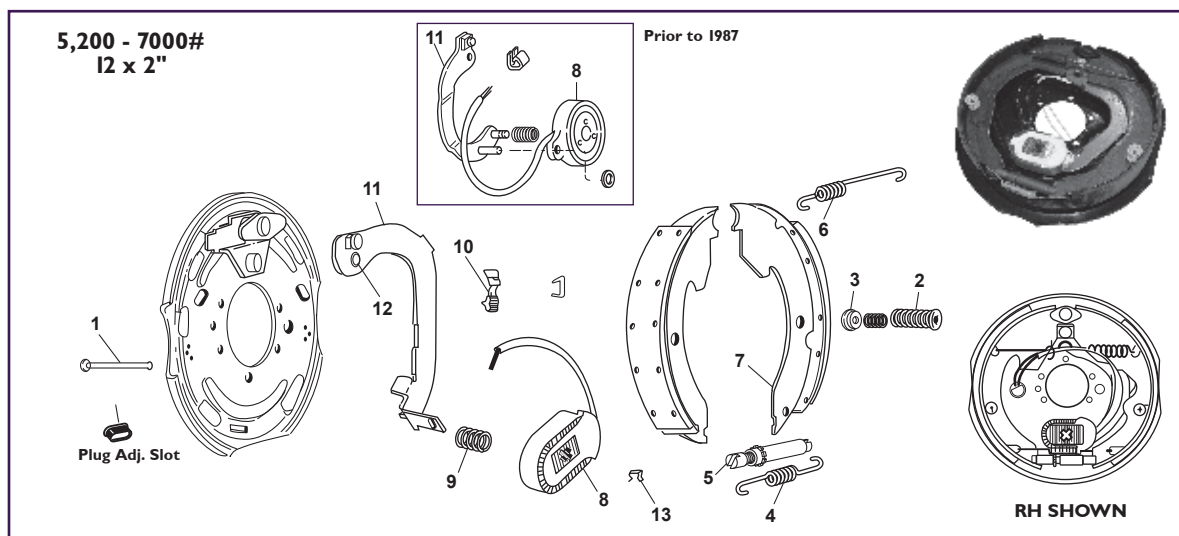
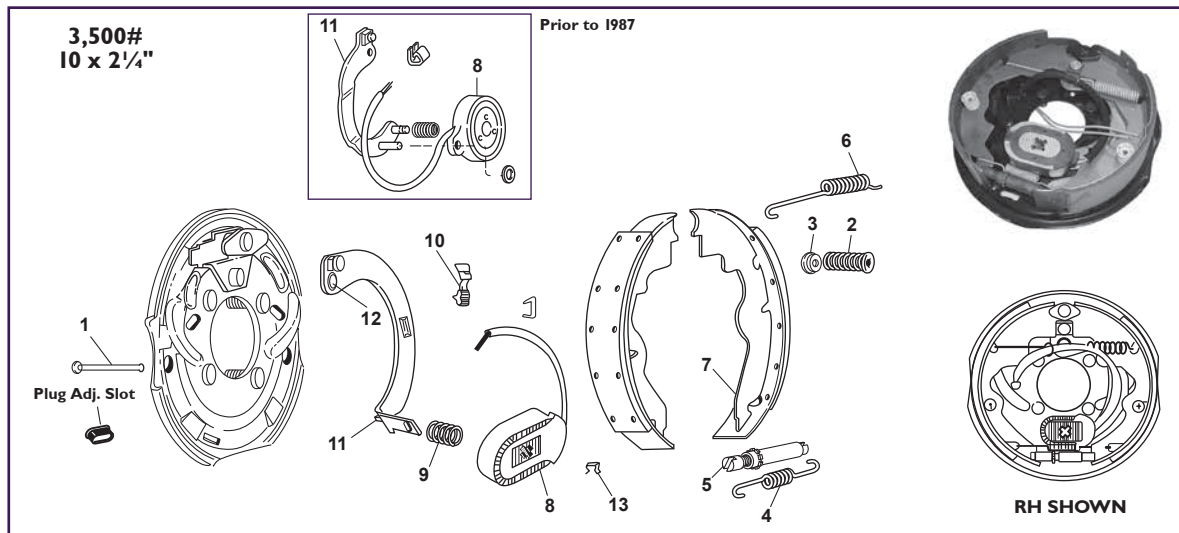


HAYES AXLE, INC.



QUALITY FOR LIFE

Service Parts For "AL-KO/Hayes" Electric Brakes



Item	#	Side	3,500# 10 x 2 1/4"	5,200 - 7000# 12 x 2"
Hold-Down Pin	1	LH/RH	4794	4795
Hold-Down Springs	2	LH/RH	4790	4790
Hold-Down Cup	3	LH/RH	4907	4907
Adj. Screw Spring	4	LH/RH	4779	4779
Adj. Screw Assy.	5	LH/RH	4761	4761
Retractor Spring	6	LH/RH	4770	4772
Brake Shoes Kit	7	LH/RH	4752	4751
Magnet (Prior To 1987)	8	LH/RH	4735	4734
Magnet Kit (After 1987)	8	LH/RH	4729	4729

Item	#	Side	3,500# 10 x 2 1/4"	5,200 - 7000# 12 x 2"
Magnet Spring	9	LH/RH	146080	146080
Strain Relief	10	LH/RH	H92715	H92715
Actuating Arm (After 1987)	11	LH/RH	4910 4911	4912 4913
Actuating Arm (Prior To 1987)	11	LH/RH	4782 4783	4784 4785
Lever Arm Bushing	12	LH/RH	4780	4780
Magnet Clip	13	LH/RH	4781	4781

Information

Hubs
& Axles

Brake
Assemblies

Suspensions
& Fasteners

Tires &
Wheels

Couplers
Jacks &
Winches

Hitches &
Towing
Accessories

Body
Components

Trailer Parts

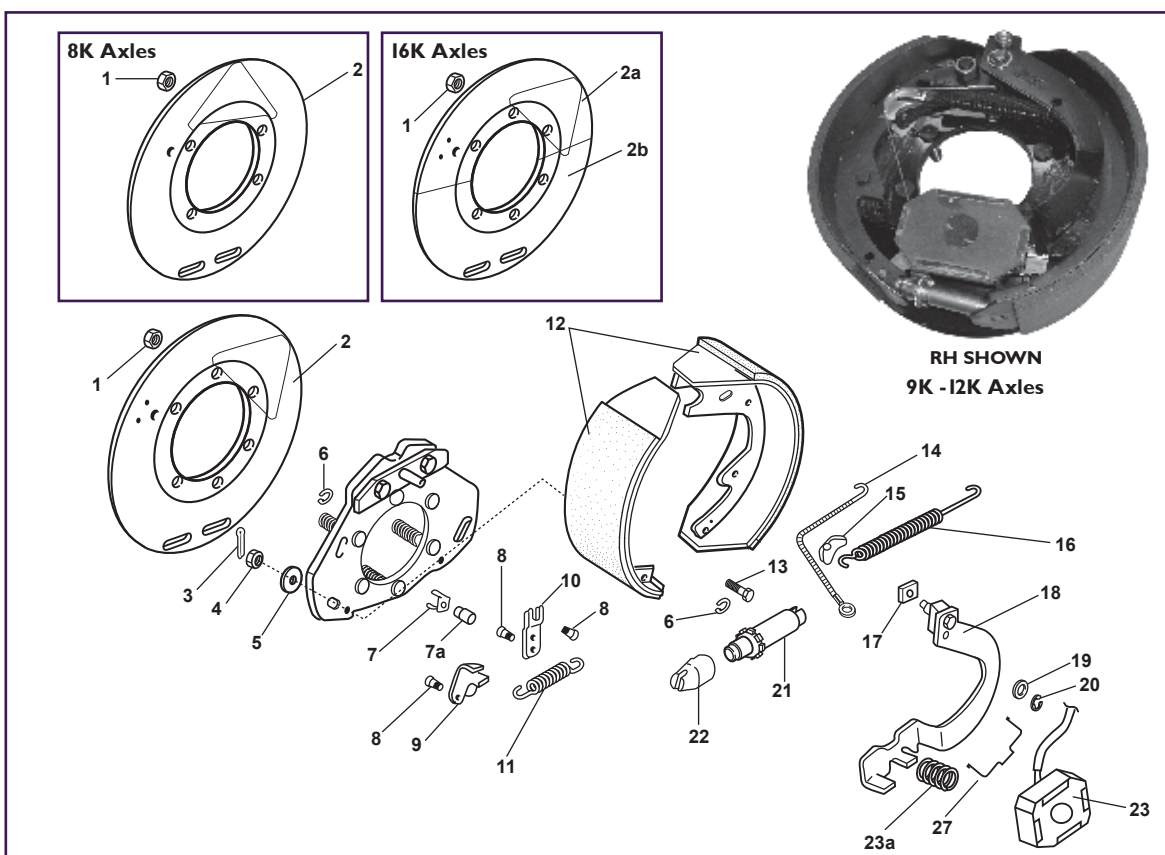
Lights &
Electrical

Locks &
Cargo Control

Brake
Actuating
Systems

Switches

Service Parts For "AL-KO/Hayes" Electric Brakes (Continued)



Item	#	Side	Side	3,500# 10 x 2 1/4"	5,200 - 7000# 12 x 2"
Cluster	-	LH/RH	4707 4708	4711 4712	4713 4714
Mounting Nut	1	LH/RH	3909	3909	3909
Dust Cover	2	LH/RH	568289 (one piece)	568229 (one piece)	H9694874 (upper - 2a) H9694873 (lower - 2b)
Cotter Pin	3	LH/RH	568224	568224	568224
Hold-Down Nut	4	LH/RH	4942	4942	4942
Hold-Down Washer	5	LH/RH	4941	4941	4941
Retaining Ring	6	LH/RH	4922	4922	4922
Strain Relief	7	LH/RH	H92715	H92715	H92715
Adj. Pivot Pin	8	LH/RH	4923	4923	4923
Auto Adj. Lever	9	LH/RH	4920 4921	4920 4921	4920 4921
Lever Bias	10	LH/RH	4916	4916	4916
Adj. Screw Spring	11	LH/RH	4777	4777	4777
Brake Shoes	12	LH/RH	4754	4757	4746
Hold-Down Pin	13	LH/RH	4940	4940	4940
Auto Adj. Cable	14	LH/RH	4928	4928	4928
Cable Guide	15	LH/RH	4930	4930	4930
Retractor Spring	16	LH/RH	4773	4773	4773
Slipper Block	17	LH/RH	4797	4797	4797
Actuating Arm	18	LH/RH	4924 4925	4924 4925	H60313652 H60313651
Washer	19	LH/RH	5114	5114	5114
Clip	20	LH/RH	4926	4926	4926
Adjusting Screw Assy.	21	LH/RH	4762 4763	4762 4763	4762 4763
Adjusting Socket	22	LH/RH	4765	4765	4765
Magnet Kit (Duro) Includes 7/7a/23/23a	23	LH/RH	4736	4736	4736
Magnet Retainer	27	LH/RH	5614	5614	5614

Hydraulic Trailer Brakes

(Brakes do **NOT** include mounting hardware - See page C33)

Part #	Brake Shoe Size	Capacity	Application	Mounting
123398 123399	7 x 1¾"	2,500 lbs	LH Single Servo Brake Assy. RH Single Servo Brake Assy.	4 Bolt
123342 123343	12 x 2"	7,000 lbs	LH Free Backing RH Free Backing	5 Bolt



Part #	Brake Shoe Size	Capacity	Application	Mounting
4808 4809	8½ x 2¼"	3,000 lbs	LH Free Backing, Dual Servo RH Free Backing, Dual Servo	4 Bolt
4810 4811	10 x 2¼"	3,500 lbs	LH Single Servo, Standard RH Single Servo, Standard	4 Bolt
4812 4813	10 x 2¼"	3,500 lbs	LH Free Backing, Marine RH Free Backing, Marine	4 Bolt
4816 4817	12 x 2"	5,200 lbs	LH Single Servo, Standard RH Single Servo, Standard	5 Bolt
4818 4819	12 x 2"	5,200 lbs	LH Free Backing, Marine RH Free Backing, Marine	5 Bolt

Information

Hubs
& Axles

Brake
Assemblies

Suspensions
& Fasteners

Tires &
Wheels

Couplers
Jacks &
Winches

Hitches &
Towing
Accessories

Body
Components

Trailer Parts

Lights &
Electrical

Locks &
Cargo Control

Brake
Actuating
Systems

Switches

Hydraulic Trailer Brakes (Continued)
(Brakes do NOT include mounting hardware - See page C33)



Part #	Brake Shoe Size	Capacity	Application	Mounting
123336 123337	12 x 2"	7,000 lbs 7,000 lbs	LH Dual Servo Brake Assy. RH Dual Servo Brake Assy.	5 Bolt
123402 123403	12¼ x 3⅝"	8,000 lbs and Old 9K	LH Dual Servo Brake Assy. RH Dual Servo Brake Assy.	4 Bolt
123410 123411	12¼ x 3⅝"	9 & 10K-GD 9 & 10K-GD	LH Dual Servo Brake Assy. RH Dual Servo Brake Assy.	7 Bolt
123404 123405	12¼ x 4"	10K-HD 10K-HD	LH Dual Servo Brake Assy. RH Dual Servo Brake Assy.	7 Bolt
123408 123409	12¼ x 5"	12K-HD 12K-HD	LH Dual Servo Brake Assy. RH Dual Servo Brake Assy.	7 Bolt
123406 123407	12¼ x 5"	15K-HD 15K-HD	LH Dual Servo Brake Assy. RH Dual Servo Brake Assy.	7 Bolt



123402



123410



123404



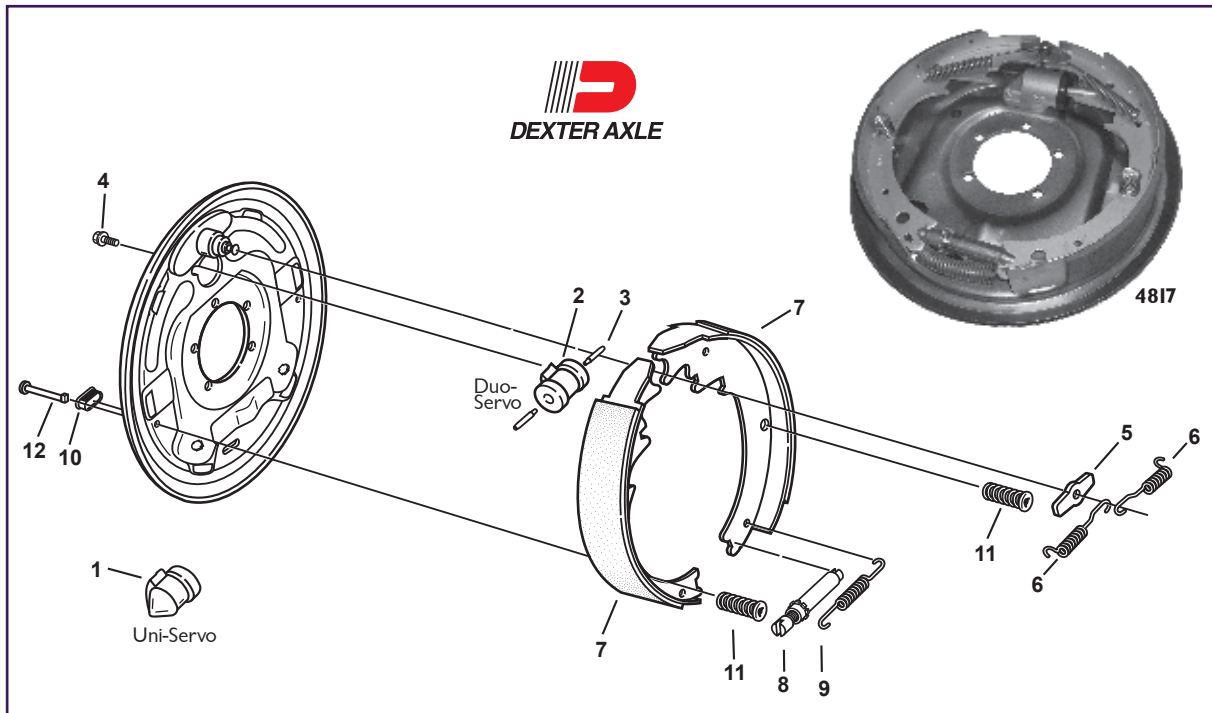
123408

Part #	Brake Shoe Size	Capacity	Application	Mounting
4822	12 x 3⅝"	8,000 lbs	Dual Servo Brake Assy.	4 Bolt
4826	12¼ x 3½"	9, 10 & 12K	Dual Servo Brake Assy.	6 Bolt



4826

Service Parts For “Dexter” Hydraulic Brakes



Item	#	Side	3,500# 10 x 2 1/4"	5,200# 12 x 2"	Duo-Servo 6,000# 12 x 2"
Cluster	-	LH/RH	4810 4811	4816 4817	123336 123337
Wheel Cylinder Uni-Servo	1	LH/RH	4882 4883	4882 4883	-
Wheel Cylinder Duo-Servo	2	LH/RH	154062 154063	154062 154063	154062 154063
Push Rod	3	LH/RH	4845	4845	4845
Screw	4	LH/RH	5261	5261	5261
Anchor Post Washer	5	LH/RH	105113	105113	105113
Retractor Spring	6	LH/RH	146009	146101	146101
Brake Shoes Kit	7	LH/RH	171267 171267	171268 171268	171269 171270
Brake Adjuster	8	LH/RH	4761	4761	4761
Brake Adjuster Spring	9	LH/RH	4899	4949	4949
Plug	10	LH/RH	146007	146007	146007
Hold Down Spring	11	LH/RH	146077	146077	146077
Hold Down Pin	12	LH/RH	4795	4794	4794

Information

Hubs
& Axles

Brake
Assemblies

Suspensions
& Fasteners

Tires &
Wheels

Couplers
Jacks &
Winches

Hitches &
Towing
Accessories

Body
Components

Trailer Parts

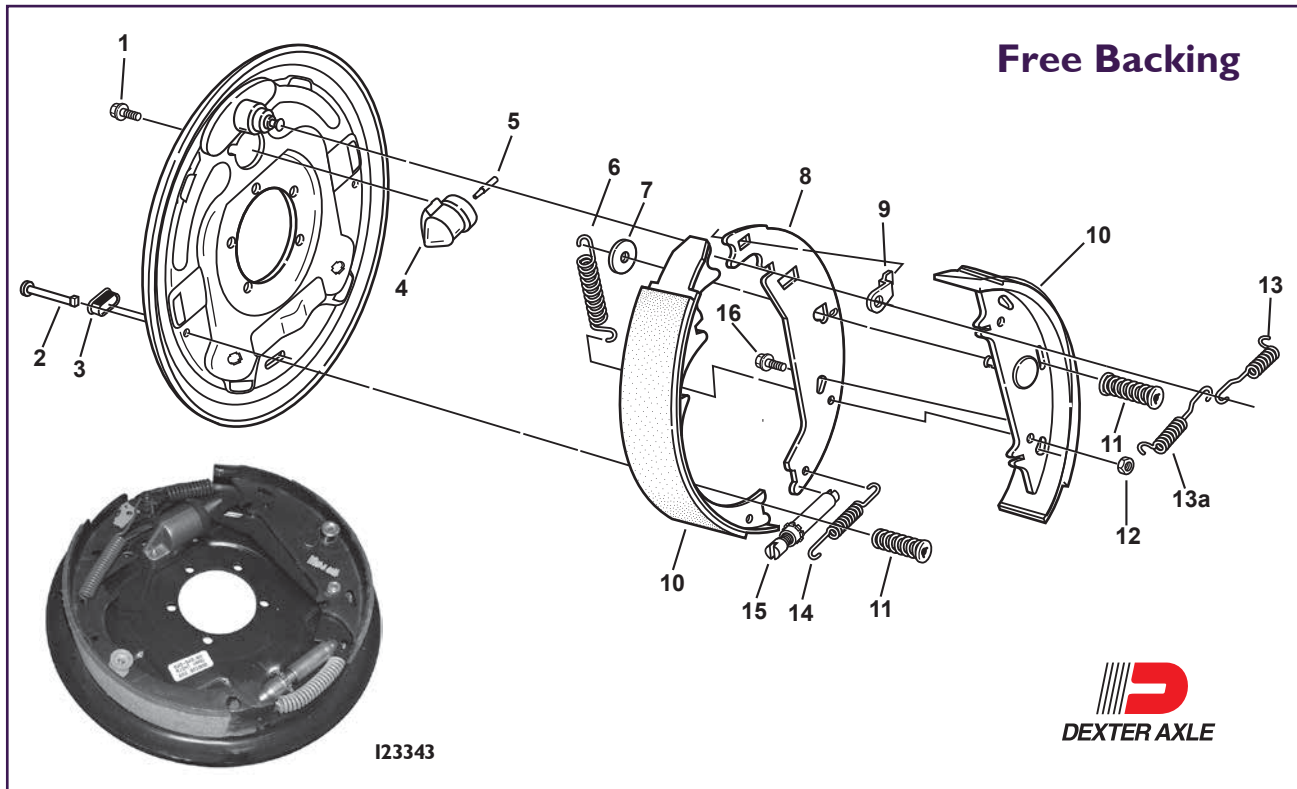
Lights &
Electrical

Locks &
Cargo Control

Brake
Actuating
Systems

Switches

Service Parts For “Dexter” Hydraulic Brakes

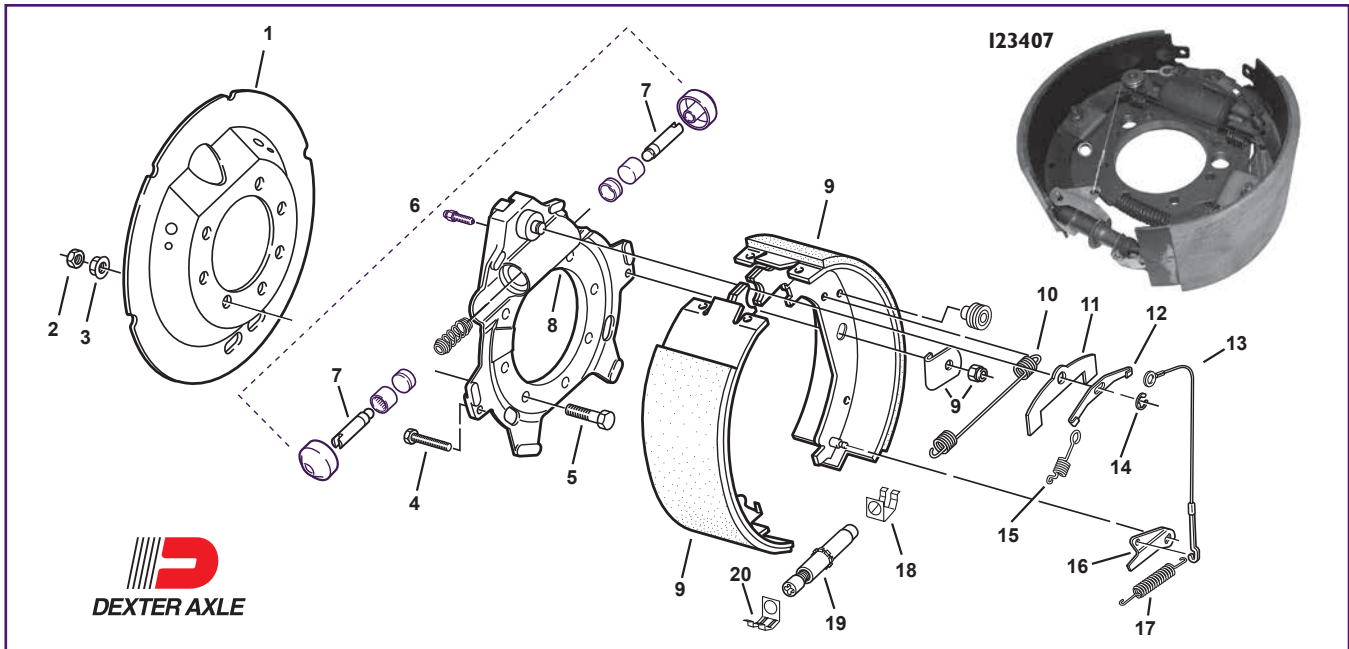


Item	#	Side	10 x 2 1/4" Free Backing	12 x 2" Free Backing
Cluster	-	LH/RH	123344 123345	123342 123343
Hold Down Pin (2)	2	LH/RH	4795	4794
Plug	3	LH/RH	146007	146007
Wheel Cylinder Single Servo	4	LH/RH	4882 4883	4882 4883
Push Rod	5	LH/RH	4845	4845
Return Spring Primary Shoe	6	LH/RH	146108-1	146108-1
Washer	7	LH/RH	105064	105064
Shoes Lever	8	LH/RH	140240	140244

Item	#	Side	10 x 2 1/4" Free Backing	12 x 2" Free Backing
Travel Link	9	LH/RH	137069	137069
Brake Shoe	10	LH/RH	171393 171393	171394 171395
Hold Down Spring (2)	11	LH/RH	146077	146077
Lock Nut	12	LH/RH	-	106011-1
Shoe Lever Return Spring	13	LH/RH	146107-1	146107-1
Retractor Spring (2)	13a	LH/RH	146009	146101
Brake Adjuster Spring	14	LH/RH	146018	146102
Brake Adjuster	15	LH/RH	4761	4761

Larger Dexter Brake Units Listed On Next Page >>>

Service Parts For “Dexter” Hydraulic Brakes



Item	#	Side	8,000# 12 1/4 x 3 3/8"	9 & 10K-GD 12 1/4 x 3 3/8"	10,000#-HD 12 1/4 x 4"	12,000#-HD 12 1/4 x 5"	15,000#-HD 12 1/4 x 5"
Cluster	-	LH/RH	123402 123403	123410 123411	123404 123405	123408 123409	123406 123407
Brake Shoes	-	LH/RH	171163	171163	171163	171163	171163
Hold Down Screw (2)	1	LH/RH	136115-20	136115-21	136115-22	136115-23	136115-23
Wheel Cyl. Kit	2	LH/RH	3909	4142	4142	4142	4142
Push Rod (2)	3	LH/RH	4119	4141	4141	4141	4141
Spider Assembly	4	LH/RH	107113	107113	107113	107113	107113
Retractor Spring	5	LH/RH	107097	107116	107116	107116	107116
Adjuster Cable	6	LH/RH	171080	171081	171081	171081	171082
Cable Guide	7	LH/RH	154033	154033	154033	154033	154033
Adjuster Lever	8	LH/RH	136064-3	136063-6	136063-6	136063-6	136063-4
Adj. Lever Spring	9	LH/RH	171165 171166	171165 171166	171167 171168	171169 171170	171169 171170
Cable Bracket	10	LH/RH	146087	146087	146087	146087	146087
Extension Spring	11	LH/RH	134062	134062	134062	134062	134062
Aduster Assembly	12	LH/RH	171456	171456	171456	171456	171456
Piston Stop	13	LH/RH	171462	171462	171462	171462	171462
Retainer	14	LH/RH	169053	169053	169053	169053	169053
Lock Washer	15	LH/RH	146131-01	146131-01	146131-01	146131-01	146131-01
Nut	16	LH/RH	171464 171463	171464 171463	171464 171463	171464 171463	171464 171463
Adjuster Clip (Barrel End)	17	LH/RH	146135 146134	146135 146134	146135 146134	146135 146134	146135 146134
Adjuster Clip (Thread End)	18	LH/RH	146133	146133	146133	146133	146133
Mounting Bolt	19	LH/RH	148019 148020	148019 148020	148019 148020	148019 148020	148019 148020
Dust Shield	20	LH/RH	146132	146132	146132	146132	146132

Information

Hubs
& Axles

Brake
Assemblies

Suspensions
& Fasteners

Tires &
Wheels

Couplers
Jacks &
Winches

Hitches &
Towing
Accessories

Body
Components

Trailer Parts

Lights &
Electrical

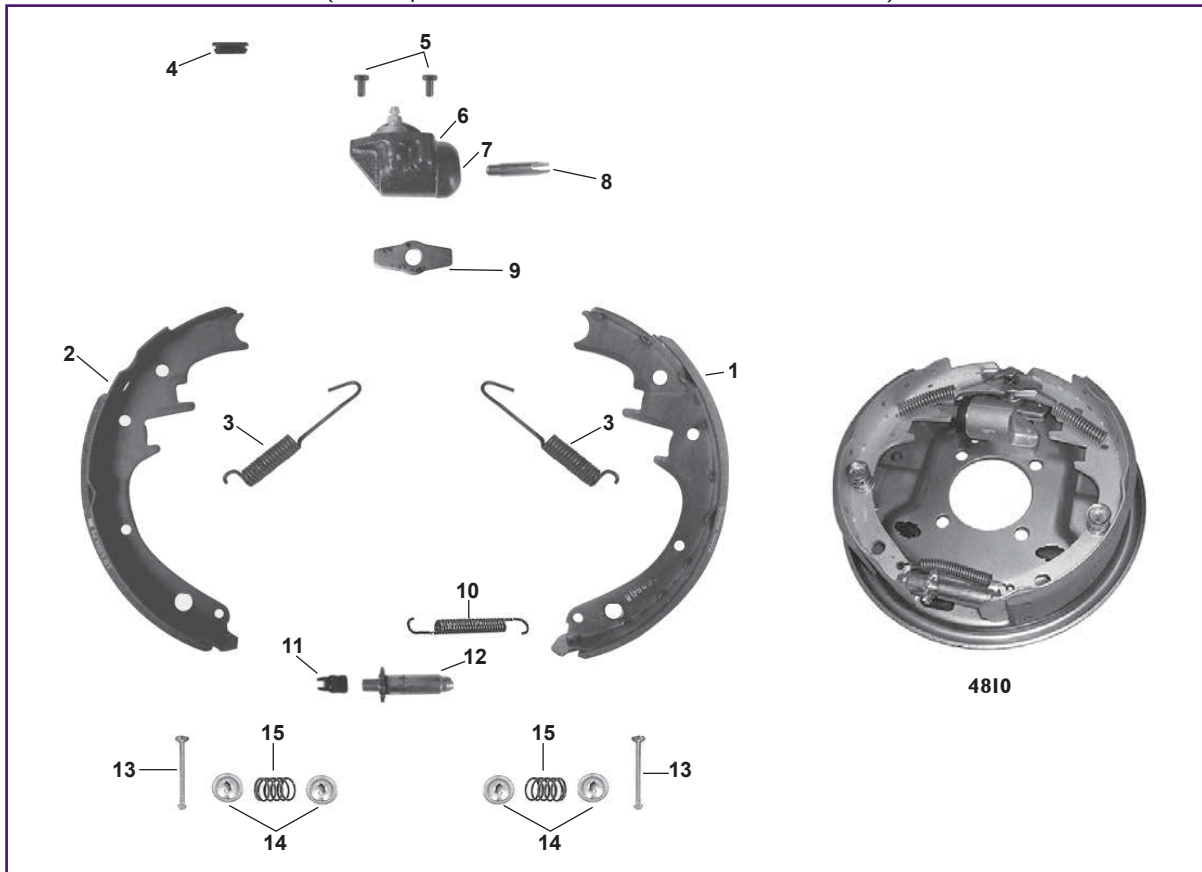
Locks &
Cargo Control

Brake
Actuating
Systems

Switches

Service Parts For "Titan/Dico" Hydraulic Brakes

(These parts also fit most other brands of brakes)



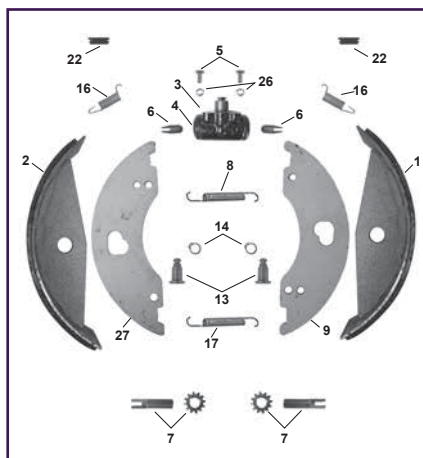
Item	#	Side	3,500# 10 x 2 1/4"	5,200# 12 x 2"
Brake Cluster	-	LH/RH	4810 4811	4816 4817
Brake Shoes (Front)	1	LH/RH	4886	4820
Brake Shoes (Rear)	1,2	LH/RH	171267	171268
Shoe Kit for 1 Brake	2	LH/RH	4887	4821
Retractor Spring	3	LH/RH	4958	4931
Adj. Hole Cover	4	LH/RH	146007	146007
Bolt	5	LH/RH	5261	5261
Wheel Cylinder Assy. (Zinc)	6	LH/RH	4882 4883	4882 4883
Wheel Cylinder Assy. (Aluminum)	6	LH/RH	5158 5159	5158 5159
Cylinder Repair Kit	7	LH/RH	4848	4848
Push Rod	8	LH/RH	4845	4845
Anchor Post Washer	9	LH/RH	4855	4855
Adj. Screw Spring	10	LH/RH	4899	4949
Adj. Screw Socket	11	LH/RH	4915	5103
Adj. Screw Assy.	12	LH/RH	4892	4936
Hold Down Pin	13	LH/RH	4795	4794
Hold Down Cup	14	LH/RH	4907	4907
Hold Down Spring	15	LH/RH	4790	4977

DICO

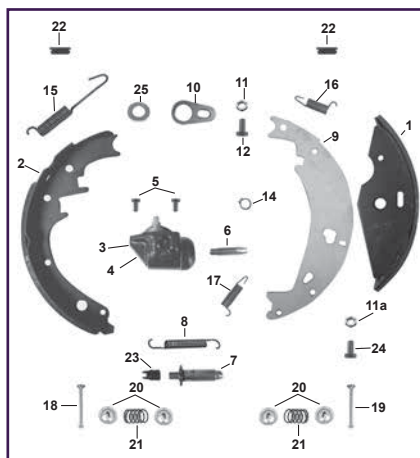
TITAN
BRAKES & ACTUATORS
By DEXTER

Service Parts For "Titan/Dico" Hydraulic Brakes (Continued)

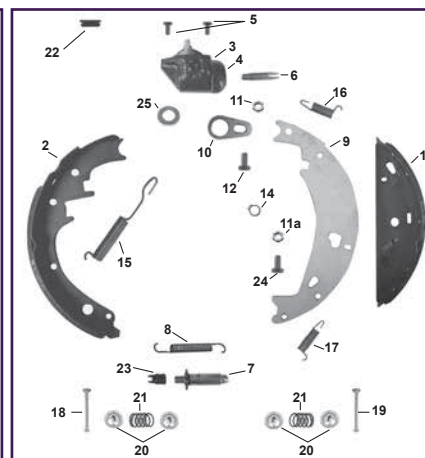
(These parts also fit most other brands of brakes)



DICO 8 1/2" FREE BACKING BRAKE



10" FREE BACKING BRAKE



12" FREE BACKING BRAKE

Item	#	Side	3,500# 10 x 2 1/4"	5,200# 12 x 2"	Duo-Servo 6,000# 12 x 2"
Brake Cluster	-	LH/RH	4808	4812	4818
Brake Shoes (Front)	1	LH/RH	4879	4880	4814
Brake Shoes (Rear)	2	LH/RH	4879	4881	4815
Wheel Cylinder Assy. (E-Coat)	3	LH/RH	4895	4882	4882
Wheel Cylinder Assy. (Aluminum)	3	LH/RH	-	5158	5158
Wheel Cyl. Aluminum(1 pair)	3,6	LH/RH	-	WC9755AL	WC9755AL
Cylinder Repair Kit	4	LH/RH	4896	4848	4848
Bolt	5	LH/RH	4934	5261	5261
Push Rod	6	LH/RH	4897	4845	4845
Adj. Screw Assy.	7	LH/RH	4898	4892	4936
Adj. Screw Spring	8	LH/RH	-	4960	4969
Shoe Lever (Front)	9	LH/RH	4888	4902	4828
Travel Link	10	LH/RH	-	4905	4905
Nut 5/16 - 18	11	LH/RH	-	5106	5106
Lock Nut	11a	LH/RH	-	4935	5106
Bolt 5/16 x 5/8	12	LH/RH	-	5226	5226
Anchor Pin	13	LH/RH	4891	-	-
Retaining Ring	14	LH/RH	4884	4884	4884
Spring Rear Shoe	15	LH/RH	-	4958	4824
Lever Spring	16	LH/RH	4893	4959	4959
Retractor Spring	17	LH/RH	4894	4885	4885
Hold Down Pin (Rear)	18	LH/RH	-	4795	4795
Hold Down Pin (Front)	19	LH/RH	-	4906	4794
Hold Down Cup	20	LH/RH	-	4907	4907
Hold Down Spring	21	LH/RH	-	4908	4978
Adj. Hole Cover	22	LH/RH	146007	146007	146007
Adj. Screw Socket	23	LH/RH	-	4915	5103
Hex Head Cap Screw	24	LH/RH	-	4934	5226
Shoe Guide Washer	25	LH/RH	-	4855	4855
Lock Washer 1/4"	26	LH/RH	5128	-	-
Shoe Lever (Rear)	27	LH/RH	4889	-	-

Part #	Brake Shoe Size	Shoe Contains
F40410	10 x 2 1/4"	2 Free Backing Front shoe #4880 , Lever Assemblies #4902 , and 2 Rear Shoes #4881
F40412	12 x 2"	2 Free Backing Front shoe #4814 , Lever Assemblies #4828 , and 2 Rear Shoes #4815

Note: Include parts to service 2 complete brakes. Fits Dico, Titan, Demco, Fulton, Amrad and Tie Down

Information

Hubs
& Axles

Brake
Assemblies

Suspensions
& Fasteners

Tires &
Wheels

Couplers
Jacks &
Winches

Hitches &
Towing
Accessories

Body
Components

Trailer Parts

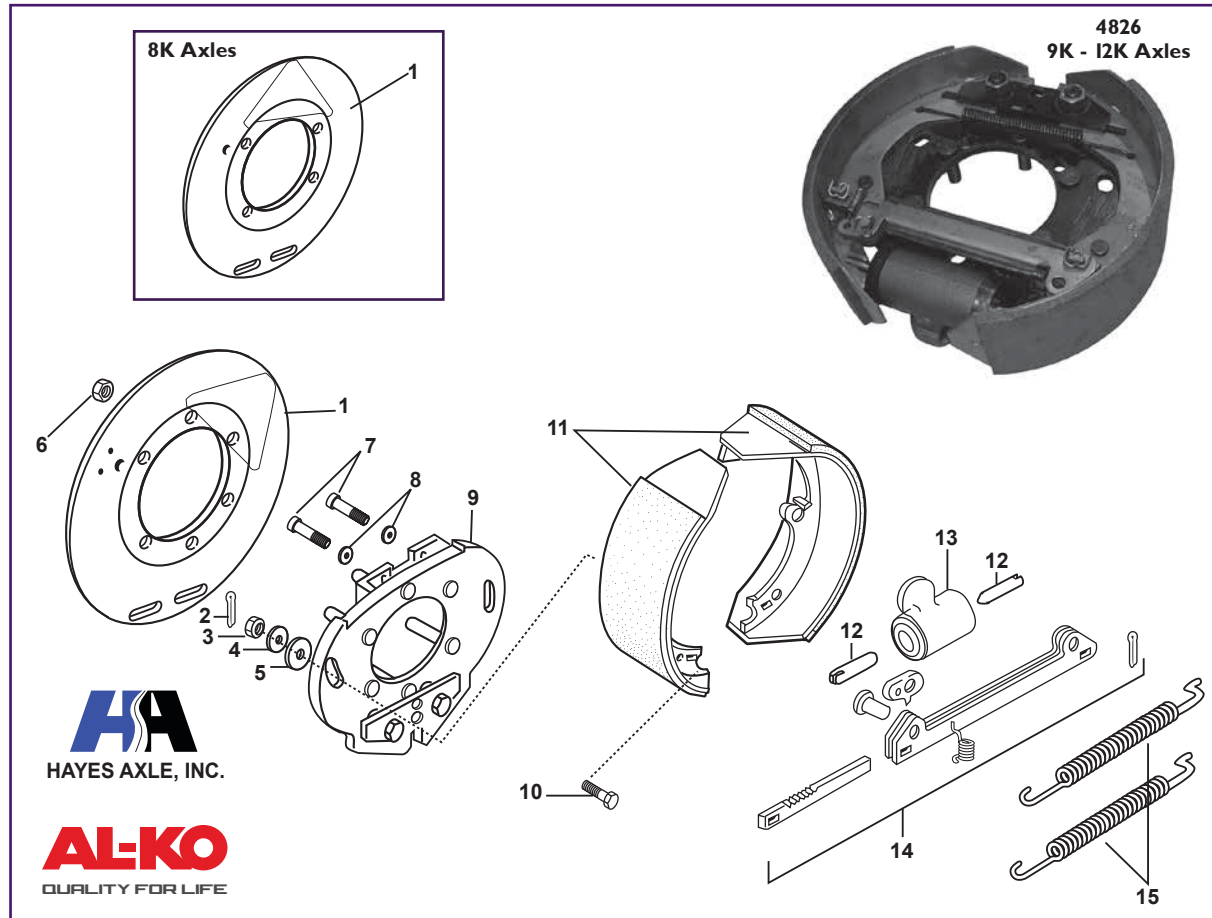
Lights &
Electrical

Locks &
Cargo Control

Brake
Actuating
Systems

Switches

Service Parts For “AL-KO/Hayes” Hydraulic Brakes



Item	#	Side	8,000# 12 x 3 3/8"	9, 10 & 12K 12 1/4 x 3 1/2"
Brake Cluster	-	LH/RH	4822	4826
Dust Shield	1	LH/RH	568289-3	568229
Cotter Pin	2	LH/RH	568224	568224
Nut Hold Down	3	LH/RH	4963	4963
Belleville Washer	4	LH/RH	568225	568225
Washer Hold Down	5	LH/RH	4941	4941
Nut	6	LH/RH	3909	3909
Bolt	7	LH/RH	14043	14043

Item	#	Side	8,000# 12 x 3 3/8"	9, 10 & 12K 12 1/4 x 3 1/2"
Lock Washer	8	LH/RH	4145	4145
Bolt Hold Down	10	LH/RH	4961	4961
Brake Shoes	11	LH/RH	4758	4759
Push Rod	12	LH/RH	4753	4753
Wheel Cylinder	13	LH/RH	4851	4853
Self Adjuster	14	LH/RH	4938	4938
Spring Retractor	15	LH/RH	4775	4775

“Tie-Down” 8” Disc Brakes

(Integral Vented Hub and Rotor, Premier Marine Dacromet Finish.

Includes 2 Calipers and Slide Pins, 2 Brackets, 2 Integral Hubs & Rotors, Bearings, Seals, Caps, and Lug Nuts.)



Part #, Complete pair with Bearings	Part #, One side only, without Bearings	Axle Capacity	Rotor Size	Bolt Pattern	Stud Size	Brake Flange	Spindle Type/Size	Fits Wheel Size
46512-2A	46512	2,700 lbs	8”	5 on 4.5”	½”-20	4 bolt	BT1/1½” x 1½”	10” to 13”
46513-2A	46513	3,500 lbs	8.15”	5 on 4.5”	½”-20	4 bolt	#84/1⅜” x 1½”	10” to 13”

“Kodiak” 8” Disc Brakes

(Integral Vented Hub and Rotor, Marine Dacromet Finish. Includes 2 Calipers and Slide Pins, 2 Brackets, 2 Hubs & Rotors, Bearings, Seals, Caps, and Lug Nuts. Fits most 10” to 13” wheels.)



Part #, Complete pair with Bearings	Part #, One side only, without Bearings	Axle Capacity	Rotor Size	Bolt Pattern	Stud Size	Brake Flange	Spindle Type/Size	Fits Wheel Size
5859	5859-H	2,700 lbs	8”	5 on 4.5”	½”-20	4 bolt	BT1/1½” x 1½”	10” to 13”
5902	5902-H	3,500 lbs	8”	5 on 4.5”	½”-20	4 bolt	#84/1⅜” x 1½”	10” to 13”

“Titan” Disc Brakes



(Disc Brakes. Integral Vented Hub and Rotor, Premier Marine Dacromet Finish.
Includes 2 Calipers and Slide Pins, 2 Brackets, 2 Integral Hubs & Rotors, Bearings, Seals, Caps, and Lug Nuts.)



T2HRCM10DACA



T2HRCM12DACA



T2HRCM13378DACA

Part #, with Bearings	Part #, without Bearings	Axle Capacity	Rotor Size	Bolt Pattern	Stud Size	Brake Flange	Spindle Type/Size	Fits Wheel Size
T2HRCM10DACA	T2HRCM10DAC	3,500 lbs	10"	5 on 4.5"	½"-20	4 bolt	#84/1⅝" x 1⅛"	13" and up
T2HRCM12DACA	T2HRCM12DAC	5,200 lbs & 6,000 lbs	12"	6 on 5.5"	½"-20	5 bolt	#42/1¾" x 1¼"	15" and up
T2HRCM13378DACA	T2HRCM13378DAC	7,000 lbs	13"	8 on 6.5"	½"-20	5 bolt	#42/1¾" x 1¼"	16" and up
T2HRCM13379DACA	T2HRCM13379DAC	7,000 lbs	13"	8 on 6.5"	⅝"-18	5 bolt	#42/1¾" x 1¼"	16" and up

Major advantages of Disc Brakes as compared to Drum Brakes



MAINTENANCE

1. Fewer moving parts. Compare the caliper with one moving part, to a drum brake, with between 9 and 12 moving parts.
2. Longer life due to fewer moving parts and more effective heat dissipation.
3. Friction pads are easily accessible for replacement or inspection.
4. Easy access to caliper for cleaning and maintenance.
5. Entire caliper can be removed for maintenance without removing rotor and hub. (Kodiak's caliper components can be replaced with GM replacement parts if necessary. Kodiak parts are recommended)
6. Entire rotor can be removed for maintenance* without removing hub.
* Kodiak's vented rotors are furnished with ample distance between the friction pads to allow for normal wear. Should it become necessary, the rotors can be "turned" or "re-surfaced".
The rotors must be replaced when worn to the minimum thickness stamped on the edge of the rotor.

PERFORMANCE

1. Calipers are self-adjusting to eliminate unequal braking from one side to the other, resulting in smoother braking. Brake adjustment headaches are eliminated.
2. Braking performance is less likely to be affected by dirt, water, or rust contamination.
3. Much less sensitive to premature lock-up or wheel skid than corresponding uni-servo or duo-servo hydraulically operated drum brakes, or electrically operated drum brakes.
4. Fade resistant.

VALUE

Disc brakes represent a better value to the consumer in that they have a lower owning cost over the expected life of the trailer.

"G4" Stainless Steel Disc Brake

- Grade 360 Aluminum Vented Calipers
- Rubber Booted Bronze Pistons
- Stainless Steel Rotor
- Galvanized Mounting Brackets
- Semi-Metallic Flatting Pads
- Replaced by G5 Series



Information

Hubs
& Axles

Brake
Assemblies

Suspensions
& Fasteners

Tires &
Wheels

Couplers
Jacks &
Winches

Hitches &
Towing
Accessories

Body
Components

Trailer Parts

Lights &
Electrical

Locks &
Cargo Control

Brake
Actuating
Systems

Switches

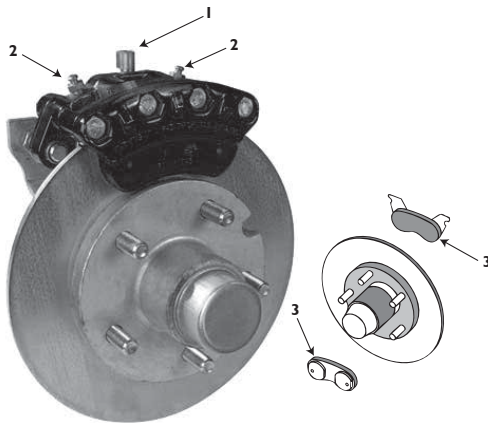
"G4" Stainless Steel Disc Brake Parts

Item #	Part #	Description	Mfg Part #
1	5850	90° Inverted Flare Inlet Fitting	11242
2	5844	Stainless Steel Bleeder Valve	11246
3	5848	Brake Pad Set, for 2 Wheels	81100

"G4" to "G5" Caliper Conversion Kits

Update to a new "G5" Caliper, using the original G4 hub and rotor.
(Each kit does one wheel)

Part #	Description
82073	Fits 5 lug
82074	Fits 6 lug



"G5" Stainless Steel Disc Brake

- Rotor Material: 304 Stainless Steel
- Rotor Thickness: 0.3125"
- Caliper Material: 380 Aluminum w/E-Coat
- Piston: Stainless Steel/Aluminum
- Slider Pins: Stainless Steel
- Mounting Bracket: GalvX
- Brake Pads Type: Ceramic/Stainless Steel



81117

3,500# Axle - 5 Lug Hub

For: 13", 14" or 15" Wheels,
Replaces 10" Drum Brakes
Rotor Diameter: 9.6" x 0.3125"
Hub Capacity: 1,750#
Hub Bearings Size: 1 1/8" & 1 3/8"
Hub Finish: GalvX
Hub Bolt Pattern: 5 on 4.5"



81118

6,000# Axle - 6 Lug Hub

For: 14" or 15" Wheels,
Replaces 12" Drum Brakes
Rotor Diameter: 11.75" x 0.3125"
Hub Capacity: 3,000#
Hub Bearings Size: 1 1/4" & 1 3/4"
Hub Finish: GalvX
Hub Bolt Pattern: 6 on 5.5"

"G5" Stainless Steel Disc Brakes

Part #	Description
81117	One side; No Bearings
81117-2A	One pair with Bearings

"G5" Stainless Steel Disc Brakes

Part #	Description
81118	One side; No Bearings
81118-2A	One pair with Bearings

Eliminator Disc Brakes with Vented Rotor and Aluminum Caliper



- E-coat finish protects the caliper from salt crystallization.
- Stainless Steel caliper slide pins are easily accessible with 7/16" hex heads for quick removal.
- GalvX coated brake pad backing plates further reduce areas susceptible to corrosion.
- All aluminum caliper, 380 series alloy, sheds heat five times faster than traditional cast iron calipers.
- Compact design allows short axle over hangs and provides direct brake line routing back to the axle.
- Oil impregnated bronze bushings last longer and slide smoother.
- Oversize rubber boot is 50% thicker by design and provides a more positive piston withdrawal.



Integral Style Vented Disc Brake Kits

Part #	Description
46501*	1750# - 5 Lug Integral Style 9.6", GalvX Rotor. Fits 13" - 15" wheels. (without Bearings)
46501-2A	Includes 1 pair #46501 w/Bearings for 1 Axle
46452*	3000# - 6 Lug Integral Style 12", GalvX Rotor. (without Bearings)
46452-2A	Includes 1 pair #46452 w/Bearings for 1 Axle

* Sold as one side only. Order 2 per axle or order "2A" kit

* Includes:

- 1 Aluminum Caliper Assembly
- 1 Vented Rotor
- 1 GalvX Mounting Brackets w/Stainless Steel Slide Pins installed.

NOTE: Brake Mounting Hardware NOT included

Brake Mounting Hardware (NOT included with brake)

Part #	Description
4140	7/16" - 20 x 1" Bolt - Zinc Plated
4141	7/16" Lock Washer - Zinc Plated
4142	7/16" - 20 Nut - Zinc Plated
4143	3/8" - 24 x 1" Bolt - Zinc Plated
4144	3/8" - 24 Nut - Zinc Plated
4145	3/8" Lock Washer - Zinc Plated

NOTE: 10" brakes require 8 each of 7/16" hardware per axle.

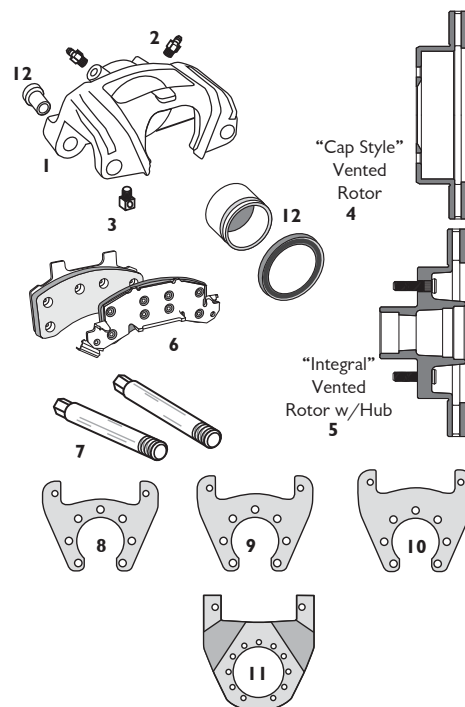
12" brakes require 10 each of 3/8" hardware per axle.

Brake Mounting Hardware (NOT included with brake)

Part #	#	Description
46304A	1	Aluminum Disc Brake Caliper for Vented Rotor; 5 and 6 lug
46802A	1	Aluminum Disc Brake Caliper for Vented Rotor; 8 lug
5844	2	Brass Bleeder Valves
5850	3	Inverted Flare Inlet Elbow Brake Line Fitting
46246X	4	10" Cap Style Vented Rotor, 5 Hole, GalvX Finish
46247X	4	12" Cap Style Vented Rotor, 6 Hole, GalvX Finish
46845X	5	9.6" Integral Vented Rotor (also fits 13" Wheels), GalvX Finish
46245X	5	10" Integral Hub and Vented Rotor, 5 Stud, GalvX Finish
46895X	5	12" Integral Hub and Vented Rotor, 6 Stud, GalvX Finish
82084	6	Brake Pads - Includes (2) Inner & (2) Outer
12114	7	7/16" Hex Head Slider Pins, Stainless Steel (2 required)
44676G	8	Mounting Bracket for #46430X - 9.6" Integral Rotor, GalvX Finish
44479G	9	Mounting Bracket for #46245X - 10" Integral Rotor, GalvX Finish
44480G	10	Mounting Bracket for #46246X - 10" Cap Style Rotor, GalvX Finish
44478X	11	Mounting Bracket for 12" Cap or Integral Style Rotor, GalvX Finish
46304RB	12	Caliper Rebuild Kit; Includes seal, boot, piston, & bronze bushings for one caliper



Integral Rotor/Hub with GalvX Coating
(One Piece Hub)



3,500 lbs 10" (Hub Over Style)

(Actual Size 10.9" O.D.) - Fits 14" & 15" wheels



Part #	Description	Mfg Part #
5829	E-Coat Rotors, "225" Calipers & Mounting Brackets	2/RCM-10-E
5879	Dacromet Rotors, "225" Calipers & Mounting Brackets	2/RCM-10-DAC
5899	Dacromet Rotors, Mounting Brackets & Stainless "225" Calipers	2/RCM-10-DAC-SS
5836	Stainless Rotors, "225" Calipers & Mounting Brackets	2/RCM-10-SS

NOTE: Kodiak Disc Brake Kits Sold In Pairs. Idler Hubs Are NOT Included.
Mounting Hardware Is NOT Included. See page C32.

3,500 lbs 10" (Integral)

Fits 14" & 15" wheels and most 13" wheels

Part # NoBearings	Part # NoBearings	Description	Mfg Part #
5849-H	5849	E-Coat Hub/Rotors, "225" Calipers & Mounting Brackets	2/HRCM-10-E
5830-H	5830	Dacromet Hub/Rotors, "225" Calipers & Mounting Brackets	2/HRCM-10-DAC
5881-H	5881	Dacromet Hub/Rotors, Mounting Brackets & Stainless "225" Calipers	2/HRCM-10-DAC-SS

NOTE: Kodiak Disc Brake Kits Sold In Pairs.
Mounting Hardware Is NOT Included. See page C32.
Bearings Are NOT Included with part #s ending in "-H".
Part #s "With Bearings" will include 2 standard bearing packs #4545-K

3,500 lbs Disc Brake Accessories

10" Rotors

Part # NoBearings	Part # NoBearings	Description	Mfg Part #
5834	-	E-Coat Slip Over Rotor Only - 10.9" O.D.	ROTOR-10-E
5880	-	Dacromet Slip Over Rotor Only - 10.9" O.D.	ROTOR-10-DAC
5843	-	Stainless Slip Over Rotor Only - 10.9" O.D.	ROTOR-10-SS
5296-H	5296	E-Coat Integral Hub and Rotor - 10" O.D.	ROTOR/HUB-10-E
5876-H	5876	Dacromet Hub and Rotor - 10" O.D.	ROTOR/HUB-10-DAC

NOTE: Bearings Are **NOT** Included with part #s ending in "-H".
Part #s "With Bearings" will include 2 standard bearing packs #4545-K

Mounting Brackets

Part #	Description	Mfg Part #
5292	Hub Over Mounting Bracket (E-Coat)	CMB-10-U
5295	Hub Over Mounting Bracket (Dacromet)	CMB-10-U-DAC
5839	Hub Over Mounting Bracket (Stainless)	CMB-10-SS
5239	Integral Mounting Bracket (E-Coat)	CMB-10-I
4991	Integral Mounting Bracket (Dacromet)	CMB-10-I-DAC

3,500 lbs & 6,000 lbs, 5 and 6 lug

Kodiak "225" Calipers & Parts

Part #	Description	Mfg Part #
4986	"225" E-Coat Caliper with Pads (Each)	DBC-225-E
4985	"225" Dacromet Caliper with Pads (Each)	DBC-225-DAC
5838	"225" Stainless Caliper with Pads (Each)	DBC-225-SS
5285	Banjo Bolt for Disc Brake	-
5287	Copper Washer for Banjo Bolt	-
5288	Ceramic Brake Pad Set for 1 Axle	DBC-225-CERM-PAD
5288-SS	Ceramic Brake Pad Set with Stainless Steel Backing	DBC-225-CERM-PAD-SS
4965	Caliper Mounting Bolt 11 mm x 1.5 (Stainless)	DBC-MHGB
5850	Inverted Flare 90 Degree Fitting	DBC-FIF-MP-90
4947	Bleeder Valve with Adapter	DBC-NPT-ADP/BBS
5851	Rubber Dust Boot for "225" Caliper	DBC-225-BOOT
5852	Rubber Seal for "225" Caliper	DBC-225-SEAL
5854	Stainless Steel Piston for "225" Caliper	DBC-225-PISTON-SS



5899



5881-H



5834



5876-H



5839



5838



5288



5285



5287



5850



4965



5851



5852



5852

Information

Hubs
& Axles

Brake
Assemblies

Suspensions
& Fasteners

Tires &
Wheels

Couplers
Jacks &
Winches

Hitches &
Towing
Accessories

Body
Components

Trailer Parts

Lights &
Electrical

Locks &
Cargo Control

Brake
Actuating
Systems

Switches



5,200 - 6,000 lbs 12" (Hub Over Style)

Part #	Description	Mfg Part #
5889	E-Coat Rotors, "225" Calipers & Mounting Brackets	2/RCM-12-E
5878	Dacromet Rotor, "225" Calipers & Mounting Brackets	2/RCM-12-DAC
5874	Dacromet Rotors, Mounting Brackets & Stainless "225" Calipers	2/RCM-12-DAC-SS
5895	Stainless Rotors, "225" Calipers & Mounting Brackets	2/RCM-12-SS

NOTE: Kodiak Disc Brake Kits Sold In Pairs. Idler Hubs Are NOT Included.
Mounting Hardware Is NOT Included. See page C32.

5,200 - 6,000 lbs 12" (Integral)

Part # NoBearings	Part # NoBearings	Description	Mfg Part #
5888-H	5888	Dacromet Hub/Rotor, "225" Calipers & Mounting Brackets	2/HRCM-12-DAC
5882-H	5882	Dacromet Hub/Rotors, Mounting Brackets & Stainless "225" Calipers	2/HRCM-12-DAC-SS

NOTE: Kodiak Disc Brake Kits Sold In Pairs
Mounting Hardware Is NOT Included. See page C32.
Bearings Are NOT Included with part #s ending in "-H".
Part #s "With Bearings" will include 2 standard bearing packs #4583-K

5,200 - 6,000 lbs Disc Brake Accessories 12" Rotors (Actual Size 12.16" O.D.)

Part # NoBearings	Part # NoBearings	Description	Mfg Part #
5891	-	E-Coat Slip Over Rotor Only - 12.16" O.D.	ROTOR-12-E
5868	-	Dacromet Slip Over Rotor Only - 12.16" O.D.	ROTOR-12-DAC
5293	-	Stainless Slip Over Rotor Only - 12.16" O.D.	ROTOR-12-SS
5887-H	5887	Dacromet Integral Hub and Rotor - 12.16" O.D.	ROTOR/HUB-12-DAC

NOTE: Bearings Are NOT Included with part #s ending in "-H".
Part #s "With Bearings" will include 2 standard bearing packs #4545-K

Mounting Brackets - Fits Both Hub Over and Integral

Part #	Description	Mfg Part #
5290	E-Coat Mounting Bracket (Slip Over & Integral)	CMB-12-U
5249	Dacromet Mounting Bracket (Slip Over & Integral)	CMB-12-U-DAC
5289	Stainless Mounting Bracket (Slip Over & Integral)	CMB-12-U-SS

3,500 lbs & 6,000 lbs, 5 and 6 lug Kodiak "225" Calipers & Parts

Part #	Description	Mfg Part #
4986	"225" E-Coat Caliper with Pads (Each)	DBC-225-E
4985	"225" Dacromet Caliper with Pads (Each)	DBC-225-DAC
5838	"225" Stainless Caliper with Pads (Each)	DBC-225-SS
5288	Ceramic Brake Pad Set for 1 Axle	DBC-225-CERM-PAD
5288-SS	Ceramic Brake Pad Set with Stainless Steel Backing	DBC-225-CERM-PAD-SS
4965	Caliper Mounting Bolt 11 mm x 1.5 (Stainless)	DBC-MHGB
5850	Inverted Flare 90 Degree Fitting	DBC-FIF-MP-90
4947	Bleeder Valve with Adapter	DBC-NPT-ADP/BBS
5851	Rubber Dust Boot for "225" Caliper	DBC-225-BOOT
5852	Rubber Seal for "225" Caliper	DBC-225-SEAL
5854	Stainless Steel Piston for "225" Caliper	DBC-225-PISTON-SS



5874



5888-H



5293

5887-H



5290



5838



5838



5838



5838



5838



5838



7,000 lbs 13" (Hub Over Style) ½" Wheel Bolts

Part #	Description	Mfg Part #
5892	Plain Rotors, E-Coat "250" Calipers & Mounting Brackets	2/RCM-133-7-8
5869	Dacromet Rotors, "250" Calipers & Mounting Brackets	2/RCM-133-7-8-DAC
5865	Dacromet Rotors, Mounting Brackets & Stainless "250" Calipers	2/RCM-133-7-8-DAC-SS
5898	Stainless Rotors, "250" Calipers & Mounting Brackets	2/RCM-133-7-8-SS

NOTE: Kodiak Disc Brake Kits Sold In Pairs. Idler Hubs Are NOT Included.
Mounting Hardware Is NOT Included. See page C32.



5869

7,000 lbs 13" (Integral) ½" Wheel Bolts

Part # NoBearings	Part # NoBearings	Description	Mfg Part #
5893-H	5893	E-Coat Hub/Rotors, "250" Calipers & Mounting Brackets	2/HRCM-133-7-8-E
5867-H	5867	Dacromet Hub/Rotors, "250" Calipers & Mounting Brackets	2/HRCM-133-7-8-DAC

NOTE: Kodiak Disc Brake Kits Sold In Pairs
Mounting Hardware Is NOT Included. See page C32.
Bearings Are NOT Included with part #s ending in "-H".
Part #s "With Bearings" will include 2 standard bearing packs #4583-K



5893-H

7,000 lbs Disc Brake Accessories 13" Rotors

Part # NoBearings	Part # NoBearings	Description	Mfg Part #
5894	-	E-Coat Slip Over Rotor Only (½" Wheel Studs)	ROTOR-133-7-8-E
5298	-	Dacromet Slip Over Rotor Only (½" Wheel Studs)	ROTOR-133-7-8-DAC
5294	-	Stainless Slip Over Rotor Only (½" Wheel Studs)	ROTOR-133-7-8-SS
5886-H	5886	E-Coat Integral Hub and Rotor (½" Wheel Studs)	ROTOR/HUB-133-7-8-E
5862-H	5862	Dacromet Integral Hub and Rotor (½" Wheel Studs)	ROTOR/HUB-133-7-8-DAC
5863-H	5863	E-Coat Integral Hub and Rotor (¾" Wheel Studs)	ROTOR/HUB-133-7-9-E

NOTE: Bearings Are NOT Included with part #s ending in "-H".
Part #s "With Bearings" will include 2 standard bearing packs #4588-K



5894

5886

Mounting Brackets - Fits Both Hub Over and Integral

Part #	Description	Mfg Part #
5885	E-Coat Mounting Bracket ½" Wheel Studs (Slip Over & Integral)	CMB-133-7
5866	Dacromet Mounting Bracket ½" Wheel Studs (Slip Over & Integral)	CMB-133-7-DAC
5883	Stainless Mounting Bracket ½" Wheel Studs (Slip Over & Integral)	CMB-133-7-SS



5866

7,000 lbs & 8,000 lbs, 8 lug Kodiak "250" Calipers & Parts

Part #	Description	Mfg Part #
5875	E-Coat Caliper with Pads (Each)	DBC-250-E
5873	Dacromet Caliper with Pads (Each)	DBC-250-DAC
5884	Stainless Caliper with Pads (Each)	DBC-250-SS
5297	Ceramic Pads for 7,000 - 8,000 Disc Brakes	DBC-250-CERM-PAD
5297-SS	Ceramic Pads Set with Stainless Steel Backing	DBC-250-CERM-PAD-SS
4947	Bleeder Valve with Adapter	DBC-NPT-ADP/BBS
5856	Rubber Dust Boot for "250" Caliper	DBC-250-BOOT
5857	Rubber Seal for "250" Caliper	DBC-250-SEAL
4965	Caliper Mounting Bolt	DBC-MHGB
5856	Rubber Dust Boot for "250" Caliper	DBC-250-BOOT



5884



5297

Information

Hubs
& Axles

Brake
Assemblies

Suspensions
& Fasteners

Tires &
Wheels

Couplers
Jacks &
Winches

Hitches &
Towing
Accessories

Body
Components

Trailer Parts

Lights &
Electrical

Locks &
Cargo Control

Brake
Actuating
Systems

Switches



8,000 lbs (Hub Over Style)



5877

Part #	Description	Mfg Part #
5877	Dacromet Rotors, Calipers & Mounting Brackets (Dexter Application) for hubs with $\frac{5}{8}$ " studs AL-KO Brackets Must Be Ordered Separately	2/RCM-133-8D-10-DAC

NOTE: Kodiak Disc Brake Kits Sold In Pairs
Mounting Hardware Is NOT Included.

8,000 lbs (Integral)



5864-H

Part #	Description	Mfg Part #
5864-H	E-coat Hub/Rotors, "250" Calipers & Mounting Brackets (Dexter Application) for hubs with $\frac{5}{8}$ " studs Bearing Kits Must Be Purchased Separately AL-KO Brackets Available On Request	2HRCM-133-8D-9E

8,000 lbs Disc Brake Accessories Rotors



5870

Part #	Description	Mfg Part #
5870	Dacromet Slip Over Rotor Only ($\frac{5}{8}$ " Wheel Studs)	ROTOR-133-8-10-DAC

Mounting Brackets



5871

Part #	Description	Mfg Part #
5871	E-Coat Mounting Bracket (AL-KO Application)	CMB-133-8A
5872	Dacromet Mounting Bracket (Dexter Application)	CMB-133-8D-DAC

7,000 lbs & 8,000 lbs, 8 lug Kodiak "250" Calipers & Parts



5884



5297

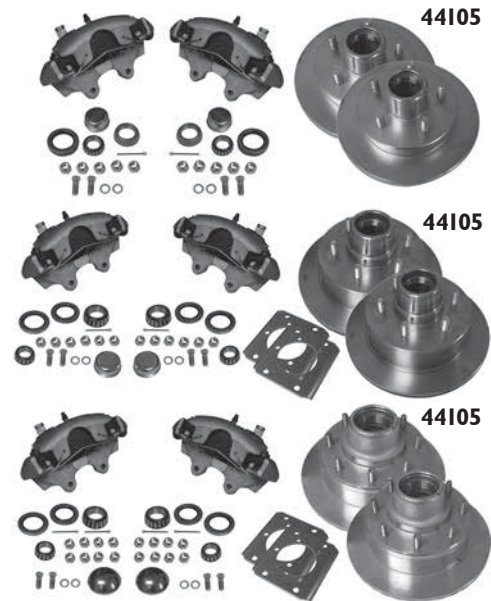
Part #	Description	Mfg Part #
5875	"250" E-Coat Caliper with Pads (Each)	DBC-250-E
5873	"250" Dacromet Caliper with Pads (Each)	DBC-250-DAC
5884	"250" Stainless Caliper with Pads (Each)	DBC-250-SS
5297	Ceramic Pads for 7,000 - 8,000 Disc Brakes	DBC-250-CERM-PAD
5297-SS	Ceramic Pad Set with Stainless Steel Backing	DBC-250-CERM-PAD-SS
4947	Bleeder Valve with Adapter	DBC-NPT-ADP/BBS
5857	Rubber Seal for "250" Caliper	DBC-250-SEAL
4965	Caliper Mounting Bolt	DBC-MHGB
5856	Rubber Dust Boot for "250" Caliper	DBC-250-BOOT

UFP Disc Brake Kits DB-35 Series

Kits include 2 hub/rotor, 2 calipers with pads, 4 caliper mounting bolts, bearings, seals, standard grease caps, lug nuts, and cotter pins. 6 and 8 lug kits for 5,500-7,000 pound axles also include 2 caliper mounting brackets and bolts. For 3,500 pound 5 lug applications, the caliper mounts directly to the standard brake flange.

“G4” Stainless Steel Disc Brake Parts

Part #	Bolt Pattern	Bearing Sizes	Finish	Axle Capacity
44105	5 on 4½”	1⅜” x 1⅞”	S-CAD	3,500 lbs
44104	5 on 4½”	1⅜” x 1⅜”	S-CAD	4,200 lbs
44106	6 on 5½”	1¾” x 1¼”	S-CAD	5,200 lbs
44108	8 on 6½”	1¾” x 1¼”	S-CAD	5,200 - 7,000 lbs



UFP DISC BRAKE PARTS Hub & Rotor Assemblies

Part # Complete w/ Standard Bearing Pack	Part # without Bearings	Axle Capacity	Rotor Size	Bolt Pattern	Bearing Size & Number	Finish	Rotor Diameter	Rotor Thickness
41038-A	41038	DB-42 (old style)	3,500 lbs	5 on 4½”	1⅜” x 1⅞” 68149 & 44649	Plain	10.25”	15/16”
44019-A	44019	DB-35	3,500 lbs	5 on 4½”	1⅜” x 1⅞” 68149 & 44649	S-CAD	9.75”	¾”
44019-1A	44019-1	DB-35 Oil	3,500 lbs	5 on 4½”	1⅜” x 1⅞” 68149 & 44649	S-CAD	9.75”	¾”
36248-A	36248	DB-35	4,200 lbs	5 on 4½”	1⅜” x 1⅞” 68149 & 68149	S-CAD	9.75”	¾”
36248-1A	36248-1	DB-35 Oil	4,200 lbs	5 on 4½”	1⅜” x 1⅞” 68149 & 44649	S-CAD	9.75”	¾”
36159-A	36159	DB-42	4,200 lbs	5 on 4½”	1⅜” x 1⅞” 68149 & 68149	Plain	9.75”	¾”
36200-A	36200	DB-42 (old style)	5,200 lbs	6 on 5½”	1¾” x 1¼” 25580 & 67048	S-CAD	11.50”	15/16”
44216-A	44216	DB-35	5,200 lbs	6 on 5½”	1¾” x 1¼” 25580 & 67048	S-CAD	11.75”	¾”
44226-A	44226	DB-35	5,200-7,000 lbs	8 on 6½”	1¾” x 1¼” 25580 & 14125	S-CAD	11.75”	¾”
N/A	36187	DB-35	5,200-7,000 lbs	6 on 5½” & 8 on 6½”	Replacement Rotor Only (Hub NOT included)	S-CAD	11.75”	¾”



32498

Hub Parts

Part #	Description
32498	Press-in stud for 5 lug hubs and rotors
32855	Press-in stud for 6 and 8 lug hubs and rotors

Information

Hubs
& Axles

Brake
Assemblies

Suspensions
& Fasteners

Tires &
Wheels

Couplers
Jacks &
Winches

Hitches &
Towing
Accessories

Body
Components

Trailer Parts

Lights &
Electrical

Locks &
Cargo Control

Brake
Actuating
Systems

Switches



“G4” Stainless Steel Disc Brake Parts

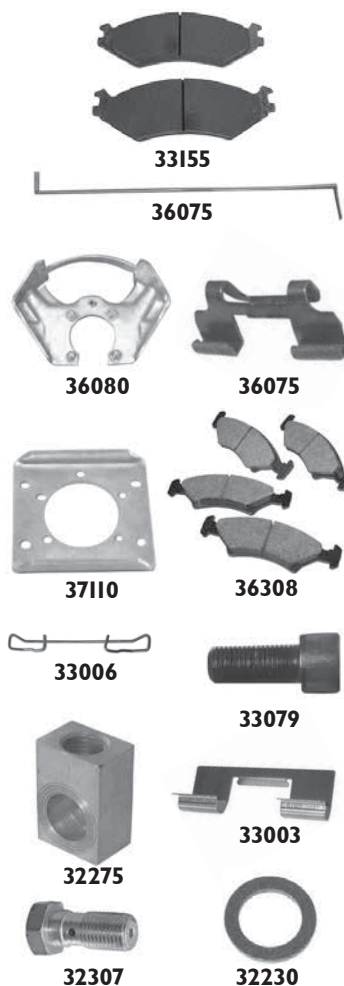
Part #	Side	Style	Finish	Brake Pads
36020	Left Hand	DB-42 (old style)	S-CAD	NOT included
36021	Right Hand	DB-42 (old style)	S-CAD	NOT included
Order 1 of part #33016 Brake Pad Set, 1 #33155 Wire Retainer, and 2 #36075 Spring Clips per caliper.				

Part #	Side	Style	Finish	Brake Pads
41050-L	Left Hand	DB-35	S-CAD	Included
41050-R	Right Hand	DB-35	S-CAD	Included
DB-35 style calipers for 6 and 8 lug brakes use a separate caliper mounting bracket #37110 to attach the caliper to a standard 5 bolt brake flange. When used for 5 lug hubs, the caliper mounts directly to the standard 4 bolt brake flange.				

Part #	Side	Style	Finish	Brake Pads
41275-L	Left Hand	DB-35	CAD	Included
41275-R	Right Hand	DB-35	CAD	Included
DB-35 style caliper with parking brake feature. Required for European markets				

Part #	Side	Style	Finish	Brake Pads
42015-L	Left Hand	DB-35	Aluminum	Included
42015-R	Right Hand	DB-35	Aluminum	Included
DB-35 style caliper. Aluminum construction.				

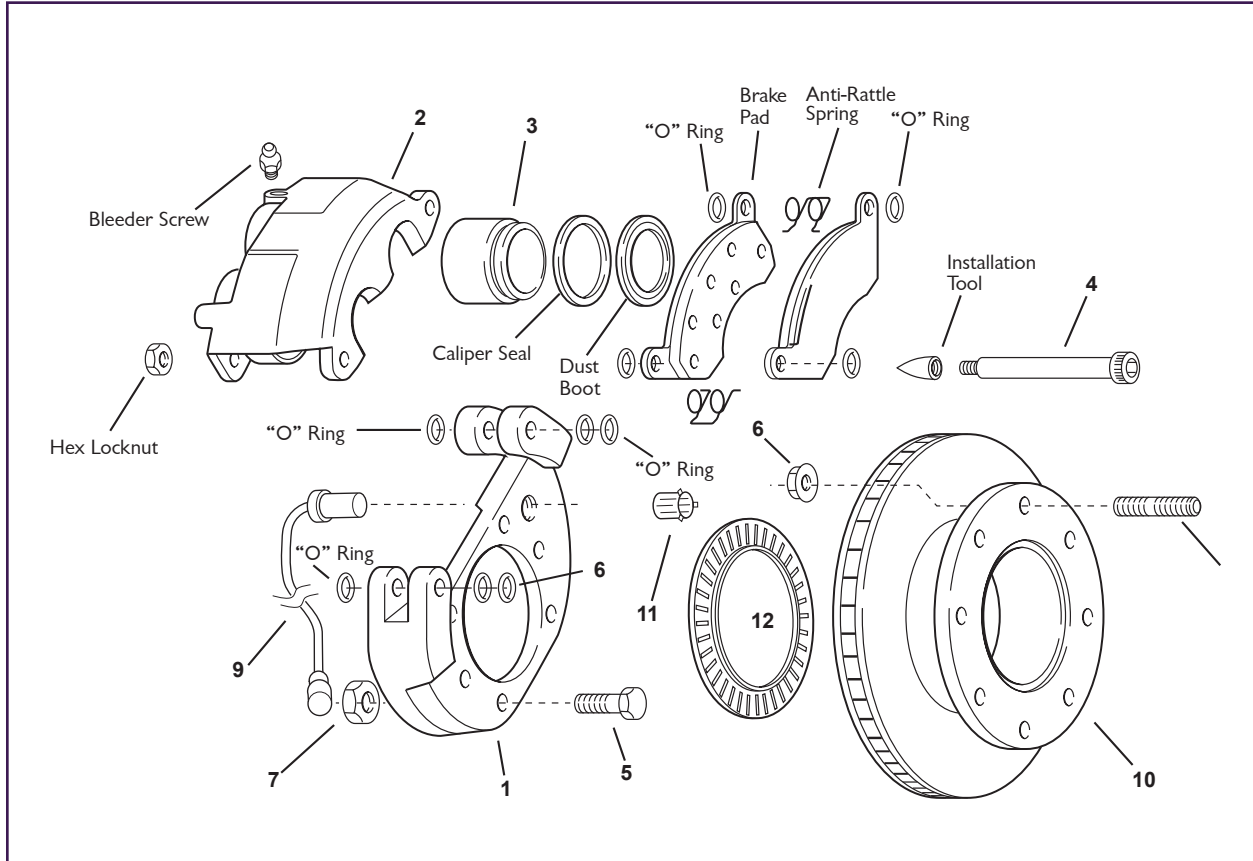
7,000 lbs & 8,000 lbs, 8 lug Kodiak “250” Calipers & Parts



Part #	Series	Description
33016	DB-42 (old style)	Brake Pad Set for one caliper. Contains 1 inner and 1 outer pad
33155	DB-42 (old style)	Wire Retainer for pads (1 required per caliper)
36075	DB-42 (old style)	Spring Clip, Pad Retainer (2 required per caliper)
36080	DB-42 (old style)	Caliper Mounting Bracket, Stamped steel, S Cad plated (1 required per caliper)
4140	DB-42 (old style)	Caliper Bracket Mounting Bolt 7/16 - 20 x 1" S zinc plated (4 required per bracket)
4141	DB-42 (old style)	Caliper Bracket Mounting Lock Washer 7/16" zinc plated (4 required per bracket)
4142	DB-42 (old style)	Caliper Bracket Mounting Hex Nut, 7/16 - 20, zinc plated (4 required per bracket)
36308	DB-35	Brake Pad Set for two calipers. Contains 2 inner and 2 outer pads
37110	DB-35	Caliper Mounting Bracket for 5200-7000 axles. Bolts to standard 5 hole brake flange. S Cad plated.
33079	DB-35	Caliper Mounting Bolt 7/16- 20 x 1 1/8". Zinc plated w/thread-lock. Attaches caliper to bracket. (2 required per caliper)
4143	DB-35	Caliper Bracket Mounting Bolt 3/8 - 24 x 1" Zinc plated (5 required per bracket)
4144	DB-35	Caliper Bracket Mounting Lock Washer 3/8" Zinc plated (5 required per bracket)
4145	DB-35	Caliper Bracket Mounting Hex Nut, 3/8 - 24; Zinc plated (5 required per bracket)
33006	DB-35	Anti-Rattle Clip (Spring wire)
33090	DB-35	7/16" Bolt - Hex Head
32408	DB-35	7/16" Internal Star Lock Washer
33020	DB-42 (old style)	5/16 x 2 3/4" Caliper Mounting Bolt
33003	DB-35	Stainless Steel Pad Seat
32275	DB-35 & DB-42	Brass Block for Banjo Bolt
32307	DB-35 & DB-42	Banjo Bolt
32230	DB-35 & DB-42	Copper Washer for Banjo Bolt



Service Parts For "Dexter" Disc Brakes



Item	#	Side	10K, 12K Axles
Caliper Repair Kit Kit contains: • "O" Ring • Bleeder Screw • Caliper Seal • Dust Boot	-	LH/RH	171181
Disc Brake Replacement Pad Kit Kit contains: • Brake Pad • Anti-Rattle Spring • Hex Locknut • Installation Tool	-	LH/RH	171180
Anchor Yoke Assembly	1	LH/RH	190002-02
Caliper Assembly	2	LH/RH	189002-02

Item	#	Side	0K, 12K Axles
Caliper Piston	3	LH/RH	154066
Shoulder Screw 5/8 x 5	4	LH/RH	107186
Hex Screw 7/16 - 20 x 1.75	5	LH/RH	107116
Flange Nut	6	LH/RH	106046
Hex Nut 7/16 - 20	7	LH/RH	106017
Rotor Mounting Stud	8	LH/RH	125014
ABS Sensor (Straight)	9	LH/RH	197004
Rotor	10	LH/RH	170006-1
ABS Sensor Retaining Clip	11	LH/RH	197002
ABS Tone Ring	12	LH/RH	124203

Information

Hubs
& Axles

Brake
Assemblies

Suspensions
& Fasteners

Tires &
Wheels

Couplers
Jacks &
Winches

Hitches &
Towing
Accessories

Body
Components

Trailer Parts

Lights &
Electrical

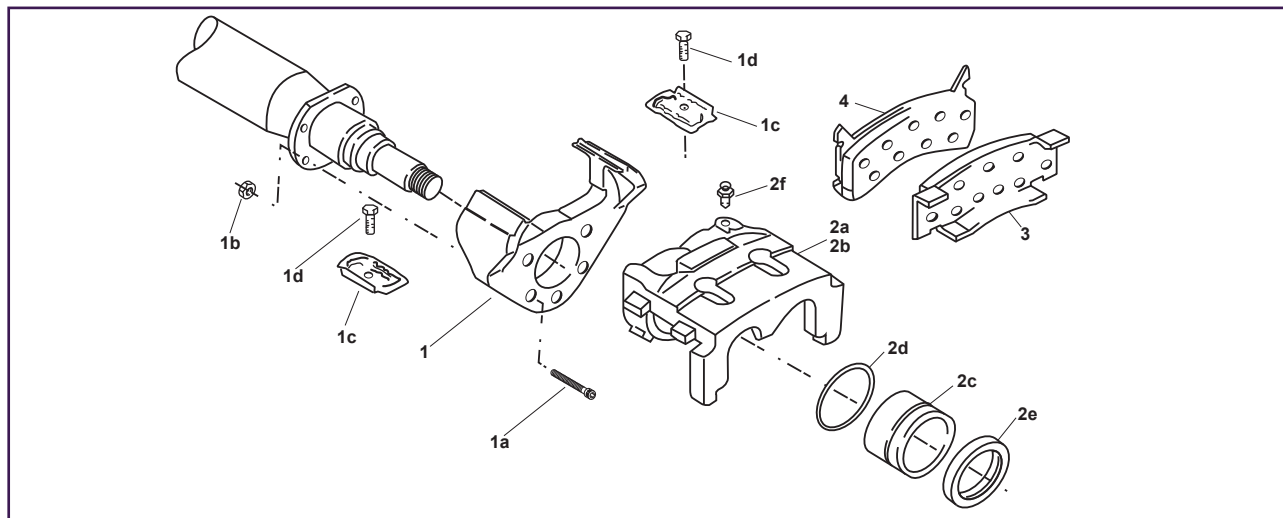
Locks &
Cargo Control

Brake
Actuating
Systems

Switches



Service Parts For “AL-KO/Hayes” 10K - 12K Disc Brakes



Part	#	Brake Part Description
H9045901	1	Torque Plate
H90756	1a	Torque Plate Mounting Bolt
3909	1b	Torque Plate Mounting Nut
H9633700	1c	Retainer Plate
H87805	1d	Retainer Plate Bolt
H9231512	2a	Caliper Assembly LH

Part	#	Brake Part Description
H9231511	1	Torque Plate
H96930	1a	Torque Plate Mounting Bolt
H80862 (Kit contains 2d & 2e)	1b	Torque Plate Mounting Nut
H80862 (Kit contains 2d & 2e)	1c	Retainer Plate
Not Available Separately	1d	Retainer Plate Bolt
4850	2a	Caliper Assembly LH



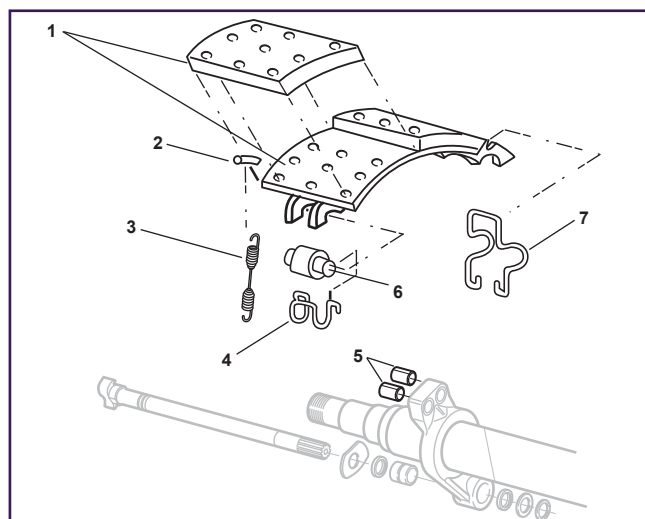
Service Parts For “AL-KO/Hayes” Air Brakes Conversion Kit from 5” to Brake Size 12¼” x 5½”



Part	Description
4948	KSL-137 Converts 5” to 5½”

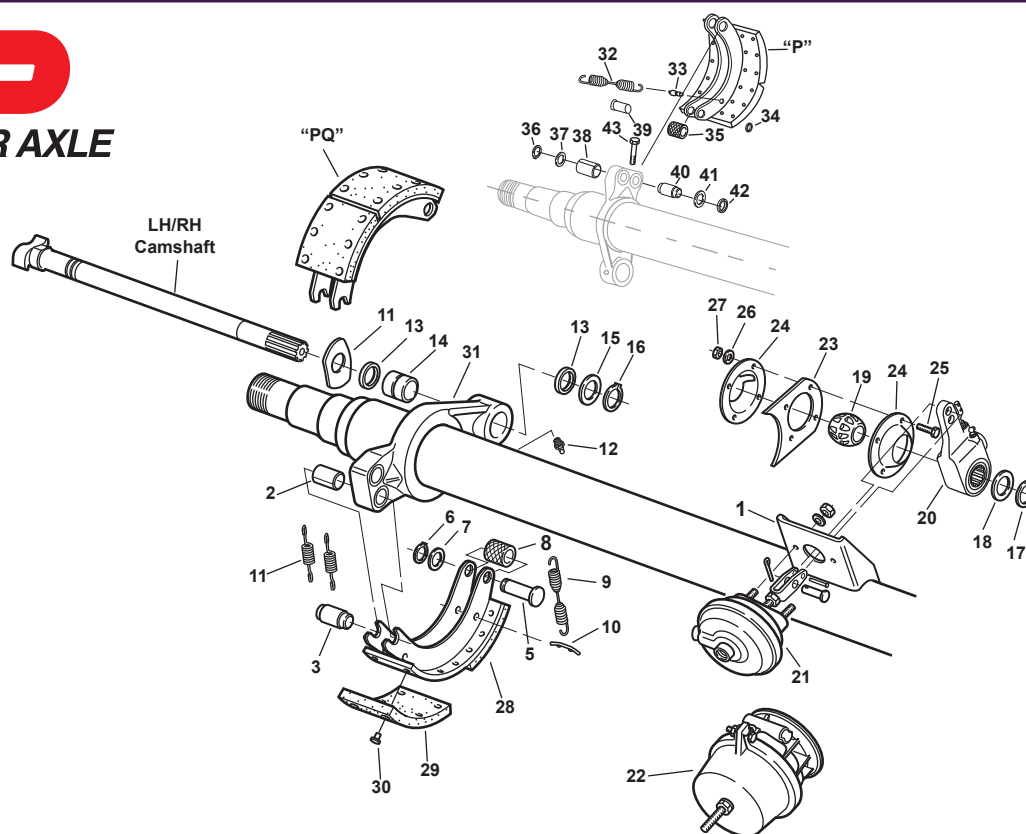
KIT CONTAINS:

- 2 - Shoe & Lining 12¼” x 5½” (1)
- 2 - Spring Retainer (2)
- 1 - Return Spring (3)
- 2 - Cam Roller Retainer (4)
- 2 - Anchor Pin (5)
- 2 - Cam Roller (6)
- 1 - Anchor Pin Retainer (U-Spring) (7)



Service Parts For "AL-KO/Hayes"

10K - 12K Disc Brakes



Shoe & Lining Assembly

Item	10K 12¼ x 4"	12K 12¼ x 5"	Qty Per Brake
Shoe & Lining Assembly "PQ"	140321-01	140322-01	2
Shoe & Lining Assembly "P"	140164-1	140165-1	2

Note: Air brake shoe & lining assemblies are sold individually.
Order quantity 4 per axle.

Brake Block Kit

Item	10K 12¼ x 4"	12K 12¼ x 5"
Brake Shoe Repair Kit	171102	171152
KIT CONTAINS:	<ul style="list-style-type: none"> • 2 - Brake Block Anchor (29) • 2 - Brake Block Cam (28) • 24 - Rivet (30) 	

Camshaft Repair Kit

Item	Description
171101	Camshaft Repair Kit - for 1 Brake "P" & "PQ"
KIT CONTAINS:	<ul style="list-style-type: none"> • 1 - "D" Washer, Camshaft (11) • 2 - Grease Seal (13) • 1 - Camshaft Bushing (14) • 2 - Washer (15) • 1 - Camshaft Washer-28 Spline (18) • 1 - Camshaft Retainer-28 Spline (17) • 2 - Snap Ring (16) • 1 - Camshaft Support Bushing (19) • 1 - Grease Fitting (NS) • 1 - Instruction Sheet (NS)

Brake Block Kit

Item	10K 12¼ x 4"	12K 12¼ x 5"
Brake Shoe Repair Kit	171460	171460
KIT CONTAINS:	<ul style="list-style-type: none"> • 2 - Bushing-Spider Anchor Pin (2) • 2 - Anchor Pin (3) • 1 - Roller (8) • 2 - Roller Pin (5) • 2 - Roller Pin Retainer (6) • 2 - Roller Pin Spacer (7) • 1 - Retractor Spring (9) • 2 - Retainer Pin (10) • 2 - Shoe Keeper Spring (11) • 1 - Instruction Sheet (NS) 	

Camshaft Repair Kit

Item	Description
171098	Brake Shoe Repair Kit - for 1 Brake "P"
KIT CONTAINS:	<ul style="list-style-type: none"> • 1 - Screw Anchor Pin Clamping (43) • 4 - Bushing-Spider Anchor Pins (38) • 2 - Anchor Pin (40) • 4 - Anchor Pin Washer (41) • 4 - Anchor Pin Retainer (36) • 2 - Roller (35) • 2 - Retainer Pin, Retractor Spring (33) • 1 - Retractor Spring (32) • 2 - Roller Pin (39) • 2 - Roller Pin Retainer (34) • 2 - Roller Pin Spacer (NS) • 1 - Instruction Sheet (NS)

Information

Hubs
& AxlesBrake
AssembliesSuspensions
& FastenersTires &
WheelsCouplers
Jacks &
WinchesHitches &
Towing
AccessoriesBody
Components

Trailer Parts

Lights &
ElectricalLocks &
Cargo ControlBrake
Actuating
Systems

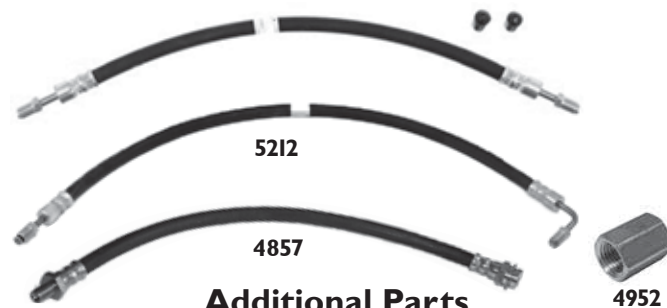
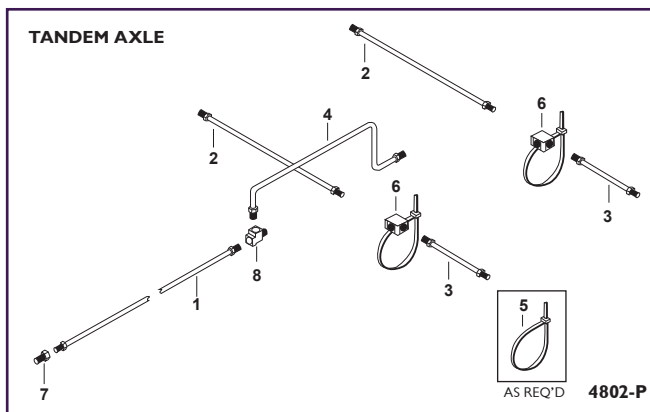
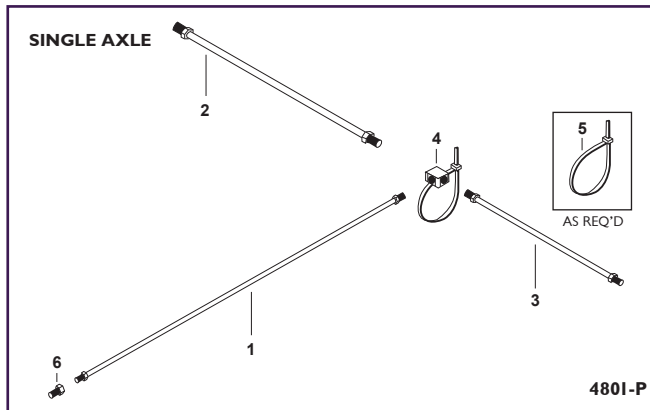
Switches

Hydraulic Brake Line Kit

All brake line hose and fittings necessary to connect the actuator to brake clusters.
Kits contain parts for one or two axles as shown.



- Designed to be used on trailers using either surge brake actuators or power brake actuators: (vacuum/hydraulic, air/hydraulic, electric/hydraulic).
- Brake lines provided are D.O.T. flexible hoses approved for use on all trailer brakes including disc brakes with floating calipers.
- All fittings are brass for the ultimate in corrosion resistance. (Available with male & female end fittings)
- Maximum pressure not to exceed 3,000 psi.



Additional Parts

DOT Part #	Description
4952	Union - Connects two brake lines end to end
4857	12" Rubber Hose (male-female) non-swivel ends - cadmium plated ends
4858	18" Rubber Hose (male-female) non-swivel ends - cadmium plated ends

D.O.T. Flex Hose Kits

DOT Part #	Description
4801-P	Single Axle
4802-P	Tandem Axle
4803-P	Triple Axle
5291	Axle Add-on Kit - D.O.T. contains parts necessary to add brake lines for one axle to an existing kit

Service Parts For D.O.T. Flex Hose Kits (Single Axle)

DOT Part #	#	Description
5209	1	22' (264") Line
5208	2	72" Line
5206	3	24" Line
5263	4	Tee with Strap
2591	5	12" Tie Strap
5284	6	1/8 MPT x 3/16 IF Adapter

Service Parts For D.O.T. Flex Hose Kits (Tandem Axle)

DOT Part #	#	Description
5209	1	22' (264") Line
5208	2	72" Line
5206	3	24" Line
5207	4	36" Line
2591	5	12" Tie Strap
5263	6	Tee with Strap
5284	7	Brass Fitting 1/8 MPT x 3/16 IF Adapter
5124	8	3/16 IF Street Tee

Rubber Brake Lines with Stainless Steel & Brass Ends (Male/Male)

DOT Part #	Description
5213	12"
5204	18"
5212	18" (90° Bend at one end)
5206	24"
5207	42"
5214	54"
5208	72"
5218	180" (15 ft.)
5210	240" (20 ft.)
5211	288" (24 ft.)

Information

Hubs
& Axles

Brake
Assemblies

Suspensions
& Fasteners

Tires &
Wheels

Couplers
Jacks &
Winches

Hitches &
Towing
Accessories

Body
Components

Trailer Parts

Lights &
Electrical

Locks &
Cargo Control

Brake
Actuating
Systems

Switches

Reverse Lock Out Solenoid

Part #	Description
4800	Reverse LOCKOUT switch is required for actuators without a free-backing feature built-in. Set for "Normally Open"
4799	2 wire for non-metallic master cylinders - "Normally Open"

Back Flow Style Brake Solenoid

Part #	Description
4804	Reverse RECIRCULATING switch is required for actuators without a free-backing feature built-in. Set for "Normally Open"
34500	UFP Recirculating Solenoid Valve (connecting tube NOT included)
34508	Connecting Tube for UFP Valve

Solenoid Adapter

Part #	Description
5283	Adapter to attach solenoid to old style Dico/Titan model 10 & 20 fittings

Brake Flush Kit

Fresh water flushing system emits a forceful flow of fresh water, showering internal parts of the brake unit, quickly, corrosive salt water, silt and mud are flushed free to extend brake component life.



Part #	Description
4805	Kit for trailer with brakes on single axle
4805-T	Kit for trailer with brakes on 2 axles
4805-G	Replacement garden hose fitting
4805-N	Replacement pop-in spray nozzle

Brake Flanges

Part #	Description
91139	2" Square Mounting, 4 Bolt Holes
91146	2" Square Mounting, 5 Bolt Holes
91136	1¾" Round Mounting, 4 Bolt Holes
91147	2½" Round Mounting, 4 Bolt Holes
91148	2¼" Round Mounting, 4 Bolt Holes
91151	2¾" Round Mounting, 5 Bolt Holes
91150	3" Round Mounting, 5 Bolt Holes

Brake Mounting Hardware Kits

Part #	Description	Contains
4733	Brake Hardware for 12" Electric and Hydraulic	(5) - #4143 (⅜ - 24 x 1" bolt) (5) - #4145 (⅜ lock washer) (5) - #4144 (⅜ - 24 nut)
4744	Brake Hardware for 10" Hydraulic	(4) - #4140 (7/16 - 20 x 1" bolt) (4) - #4141 (7/16 lock washer) (4) - #4142 (7/16 - 20 nut)
4745	Brake Hardware for 7 & 10" Electric, 7 & 8.5" Hydraulic	(4) - #4141 (7/16 lock washer) (4) - #4142 (7/16 - 20 nut)



4800



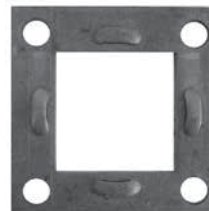
4804



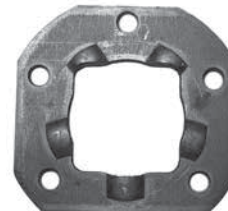
5283



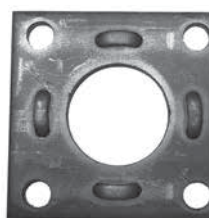
4805



91139



91146



91136



91150



4733



4744



4745